

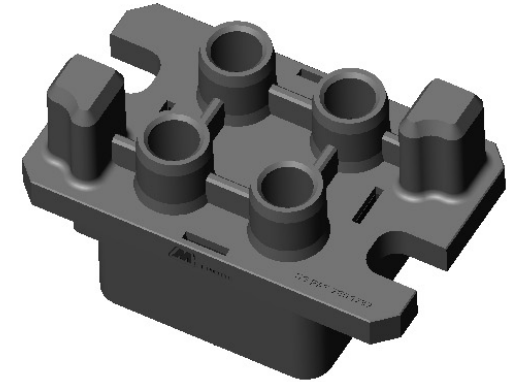
ECO	REV	DESCRIPTION	DATE
N/A	A	INITIAL RELEASE CUD DRAWING	03/10/2015

- PIN CONNECTOR -



PN: 6316-07080-01100  
CONNECTOR INSULATOR HOUSING  
INCLUDING RETENTION SPRINGS  
NO CONTACTS INSTALLED

- SOCKET CONNECTOR -



PN: 6315-07078-01100  
CONNECTOR INSULATOR HOUSING  
INCLUDING RETENTION SPRINGS  
NO CONTACTS INSTALLED

NOTES: UNLESS OTHERWISE SPECIFIED

1. CONNECTOR NAMES AND PART NUMBERS:

NAME: PIN CONNECTOR HOUSING, M-QUAD BLIND MATE  
ACCOMMODATES SIZE 9.1 MM DIAMETER PINS & 2/O BARRELS  
PART NUMBER: 6316-07080-01100

NAME: SOCKET CONNECTOR HOUSING, M-QUAD BLIND MATE  
ACCOMMODATES SIZE 9.1 MM DIAMETER PINS & 2/O BARRELS  
PART NUMBER: 6315-07078-01100

SEE SHEET 2 FOR CORRESPONDING CONTACT PART NUMBERS

2. MATERIALS:

INSULATORS: THERMOPLASTIC, UL 94 V-0  
SOCKET CONTACTS: COPPER ALLOY  
PIN CONTACTS: COPPER ALLOY  
RETENTION SPRINGS: COPPER ALLOY

3. FINISHES:

SOCKET CONTACTS: SILVER PLATING OVER NICKEL UNDER PLATING  
SOCKET BODIES: SILVER PLATING OVER NICKEL UNDER PLATING  
PIN CONTACTS: SILVER PLATING OVER NICKEL UNDER PLATING

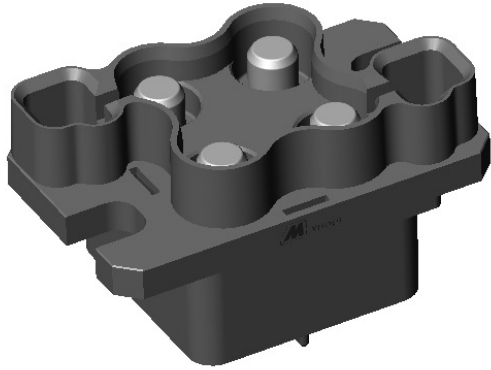
4. REFERENCE DIMENSIONS IN PARENTHESIS (.XXX) ARE WITHOUT TOLERANCE AND USED FOR INFORMATION ONLY. SOME VIEWS CONTAIN HARDWARE OR SUBSTRATES CHOSEN AS AIDING PRODUCT DESCRIPTION.

5. OPERATIONAL CONDITIONS

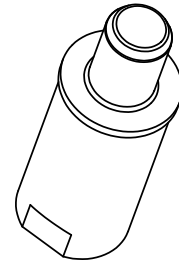
- \* CONNECTOR GUIDEPOST GATHERING OF 2.5 MM [.10 INCH].
- \* RELIABLE MATE AT 2 MM [.08 INCH] OFFSET (SEE SHEET 5).
- \* PIN OR SOCKET CONNECTOR FLOAT OF 1.3 MM [.05 INCH] OFFSET FROM CENTER POSITION, WHEN MOUNTED USING THE SHOULDER SCREW SHOWN ON SHEET 5.
- \* TYPICAL CONNECTOR MATING FORCES OF 26 N [6 LBF] WHEN POPULATED WITH CONTACTS IN ALL POSITIONS.

 <b>THIRD ANGLE PROJECTION</b>  <b>TOLERANCES</b> UNLESS OTHERWISE SPECIFIED DIMENSIONS ARE IN MILLIMETERS TOLERANCES ARE:  <table border="0"> <tr> <td><b>DECIMALS</b></td> <td><b>ANGLES</b></td> </tr> <tr> <td>X.X ± 0.2</td> <td>± 2.0</td> </tr> <tr> <td>X.XX ± 0.08</td> <td></td> </tr> <tr> <td>X.XXX ± 0.013</td> <td></td> </tr> </table>	<b>DECIMALS</b>	<b>ANGLES</b>	X.X ± 0.2	± 2.0	X.XX ± 0.08		X.XXX ± 0.013		<table border="1"> <tr> <th>NAME</th> <th>DATE</th> </tr> <tr> <td>ORIG: R. Larsen</td> <td>02/02/2015</td> </tr> <tr> <td>ENGR: R. Larsen</td> <td>02/02/2015</td> </tr> <tr> <td>CHECKED: H. Han</td> <td>02/02/2015</td> </tr> </table>	NAME	DATE	ORIG: R. Larsen	02/02/2015	ENGR: R. Larsen	02/02/2015	CHECKED: H. Han	02/02/2015	 <b>METHODE ELECTRONICS, INC.</b> <b>POWER SOLUTIONS GROUP</b> 1750 Junction Avenue, San Jose, CA 95112 (408) 453-9500  <b>TITLE:</b> <b>USER DRAWING, M-QUAD</b> <b>FOUR SIZE 9.1 MM CONTACTS</b> <b>2/O AWG WIRE CRIMP &amp; M6 THREADS</b>	<table border="1"> <tr> <th>SIZE</th> <th>DRAWING NUMBER:</th> <th>REV</th> </tr> <tr> <td><b>C</b></td> <td><b>C6313-07744-00100</b></td> <td><b>A</b></td> </tr> </table>	SIZE	DRAWING NUMBER:	REV	<b>C</b>	<b>C6313-07744-00100</b>	<b>A</b>
	<b>DECIMALS</b>	<b>ANGLES</b>																							
	X.X ± 0.2	± 2.0																							
	X.XX ± 0.08																								
X.XXX ± 0.013																									
NAME	DATE																								
ORIG: R. Larsen	02/02/2015																								
ENGR: R. Larsen	02/02/2015																								
CHECKED: H. Han	02/02/2015																								
SIZE	DRAWING NUMBER:	REV																							
<b>C</b>	<b>C6313-07744-00100</b>	<b>A</b>																							
<b>SURFACE FINISH:</b> N/A	<b>PROPRIETARY AND CONFIDENTIAL NOTICE</b> ALL INFORMATION IN THIS DRAWING IS CONFIDENTIAL AND PROPRIETARY INFORMATION AND IS NOT TO BE DISTRIBUTED, COPIED, OR SHARED EXCEPT WITH PRIOR WRITTEN APPROVAL OF METHODE ELECTRONICS, INC. POWER SOLUTIONS GROUP.	<table border="1"> <tr> <th>SCALE:</th> <th>FILENAME:</th> </tr> <tr> <td>1.5:1</td> <td>6313-07744-00100</td> </tr> </table>	SCALE:	FILENAME:	1.5:1	6313-07744-00100	<table border="1"> <tr> <th>SHEET</th> <th>OF</th> </tr> <tr> <td>1</td> <td>6</td> </tr> </table>	SHEET	OF	1	6														
SCALE:	FILENAME:																								
1.5:1	6313-07744-00100																								
SHEET	OF																								
1	6																								

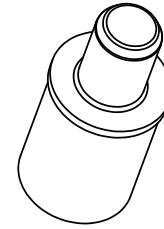
THIS DRAWING SUPERSEDES CUD DRAWING # 6313-07071-00100



**ILLUSTRATED PIN CONNECTOR  
FULLY POPULATED WITH  
9.1 MM PIN CONTACTS**



**PN: 9104-07215-02104  
9.1 MM PIN DIAMETER  
M6 THREADED TERMINATION**

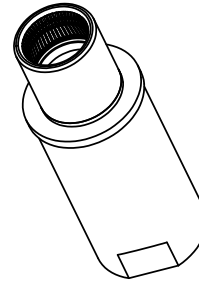


**PN: 9104-06933-02104  
9.1 MM PIN DIAMETER  
2/0 AWG CRIMP TERMINATION**

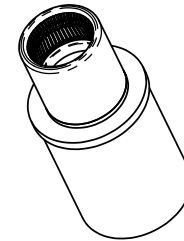
**- PIN CONTACTS -**



**ILLUSTRATED SOCKET CONNECTOR  
FULLY POPULATED WITH  
9.1 MM SOCKET CONTACTS**



**PN: 9303-07081-01104  
POWERBUD 9.1 MM PIN DIAMETER  
M6 THREADED TERMINATION**



**PN: 9303-07207-01104  
POWERBUD 9.1 mm PIN DIAMETER  
2/0 AWG CRIMP TERMINATION**

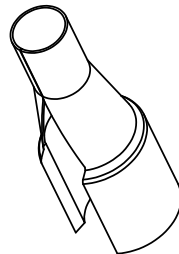
**- SOCKET CONTACTS -**

**- MOUNTING SHOULDER SCREW -**

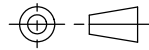



**PN: 9119-01680-02103  
M5 THREAD**

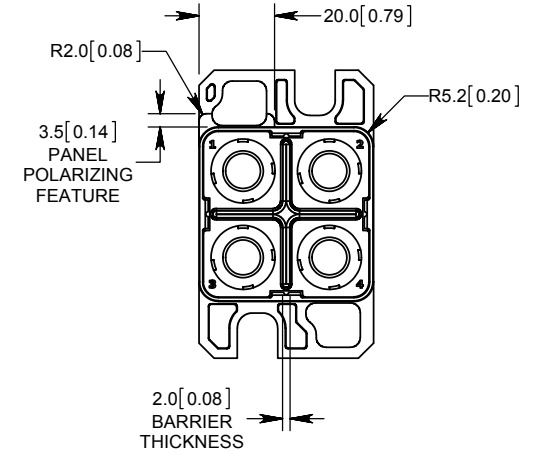
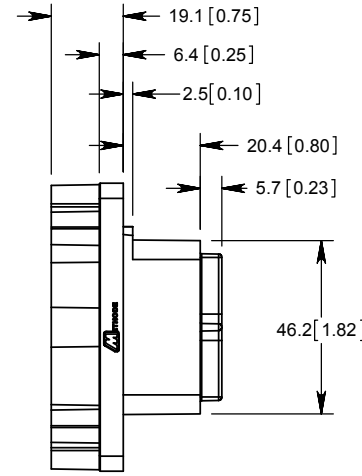
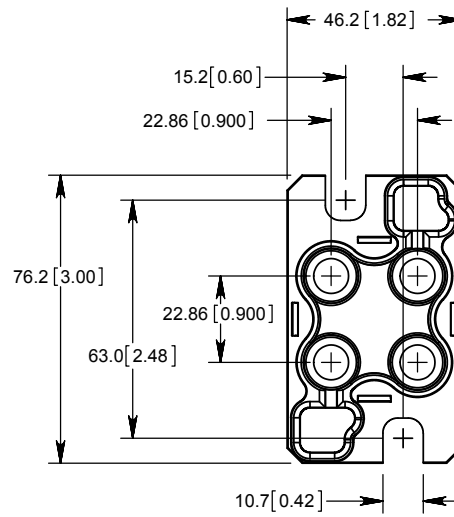
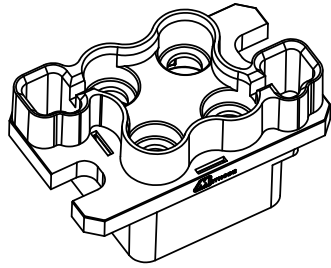
**- CONTACT REMOVAL TOOL -**



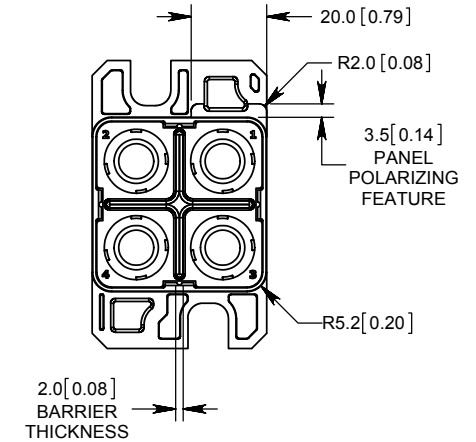
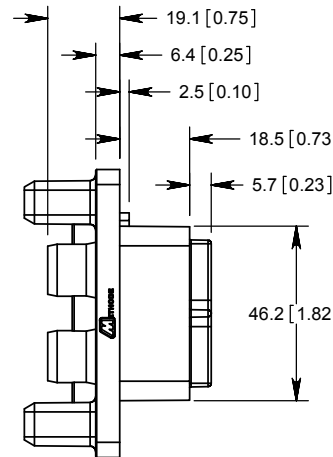
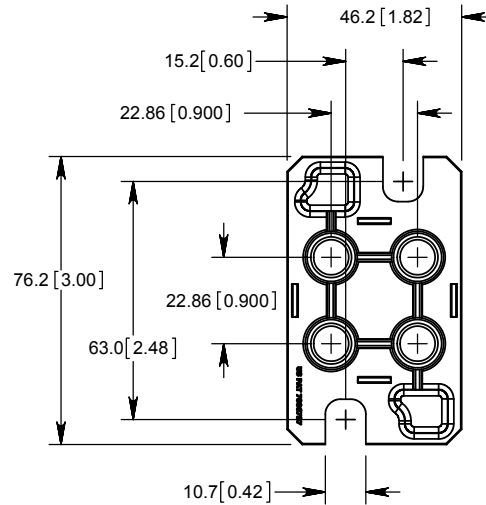
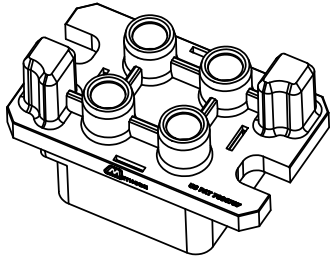
**PN: 7208-00227-02300  
SIZE 1/0 CONTACT BARREL**

 <b>THIRD ANGLE PROJECTION</b>	<b>NAME</b> <i>ORIG:</i> R. Larsen	<b>DATE</b> 02/02/2015	 <b>METHODE ELECTRONICS, INC. POWER SOLUTIONS GROUP</b> 1750 Junction Avenue, San Jose, CA 95112 (408) 453-9500								
	<b>TOLERANCES</b> UNLESS OTHERWISE SPECIFIED DIMENSIONS ARE IN MILLIMETERS TOLERANCES ARE:  <table border="0"> <tr> <td><b>DECIMALS</b></td> <td><b>ANGLES</b></td> </tr> <tr> <td>X.X ± 0.2</td> <td>± 2.0</td> </tr> <tr> <td>X.XX ± 0.08</td> <td></td> </tr> <tr> <td>X.XXX ± 0.013</td> <td></td> </tr> </table>	<b>DECIMALS</b>		<b>ANGLES</b>	X.X ± 0.2	± 2.0	X.XX ± 0.08		X.XXX ± 0.013		<b>ENGR:</b> R. Larsen
<b>DECIMALS</b>	<b>ANGLES</b>										
X.X ± 0.2	± 2.0										
X.XX ± 0.08											
X.XXX ± 0.013											
<b>SURFACE FINISH:</b> N/A	<b>CHECKED:</b> H. Han	02/02/2015	<table border="1"> <tr> <td><b>SIZE</b></td> <td><b>DRAWING NUMBER:</b></td> <td><b>REV</b></td> </tr> <tr> <td><b>C</b></td> <td><b>C6313-07744-00100</b></td> <td><b>A</b></td> </tr> </table>	<b>SIZE</b>	<b>DRAWING NUMBER:</b>	<b>REV</b>	<b>C</b>	<b>C6313-07744-00100</b>	<b>A</b>		
<b>SIZE</b>	<b>DRAWING NUMBER:</b>	<b>REV</b>									
<b>C</b>	<b>C6313-07744-00100</b>	<b>A</b>									
<b>PROPRIETARY AND CONFIDENTIAL NOTICE</b> ALL INFORMATION IN THIS DRAWING IS CONFIDENTIAL AND PROPRIETARY INFORMATION AND IS NOT TO BE DISTRIBUTED, COPIED, OR SHARED EXCEPT WITH PRIOR WRITTEN APPROVAL OF METHODE ELECTRONICS, INC. POWER SOLUTIONS GROUP.			SCALE: 1.5:1	FILENAME: 6313-07744-00100	SHEET 2 OF 6						

**PIN CONNECTOR  
INSULATOR HOUSING**

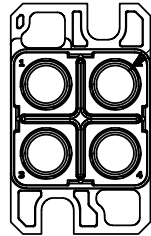
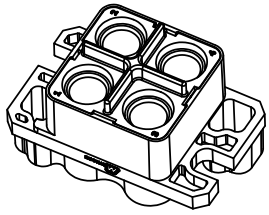


**SOCKET CONNECTOR  
INSULATOR HOUSING**



<p><b>THIRD ANGLE PROJECTION</b></p>	<p><b>NAME</b></p> <p>ORIG: R. Larsen</p>	<p><b>DATE</b></p> <p>02/02/2015</p>	<p><b>METHODE ELECTRONICS, INC. POWER SOLUTIONS GROUP</b></p> <p>1750 Junction Avenue, San Jose, CA 95112 (408) 453-9500</p>			
	<p><b>TOLERANCES</b></p> <p>UNLESS OTHERWISE SPECIFIED DIMENSIONS ARE IN MILLIMETERS TOLERANCES ARE:</p> <p><b>DECIMALS</b>      <b>ANGLES</b></p> <p>X.X      ± 0.2      ± 2.0</p> <p>X.XX      ± 0.08</p> <p>X.XXX      ± 0.013</p>	<p><b>ENGR:</b></p> <p>R. Larsen</p>		<p>02/02/2015</p>	<p><b>TITLE:</b></p> <p><b>USER DRAWING, M-QUAD FOUR SIZE 9.1 MM CONTACTS 2/0 AWG WIRE CRIMP &amp; M6 THREADS</b></p>	
<p><b>SURFACE FINISH:</b> N/A</p>	<p><b>CHECKED:</b></p> <p>H. Han</p>	<p>02/02/2015</p>	<p><b>PROPRIETARY AND CONFIDENTIAL NOTICE</b></p> <p>ALL INFORMATION IN THIS DRAWING IS CONFIDENTIAL AND PROPRIETARY INFORMATION AND IS NOT TO BE DISTRIBUTED, COPIED, OR SHARED EXCEPT WITH PRIOR WRITTEN APPROVAL OF METHODE ELECTRONICS, INC. POWER SOLUTIONS GROUP.</p>	<p><b>SIZE</b></p> <p><b>C</b></p>	<p><b>DRAWING NUMBER:</b></p> <p><b>C6313-07744-00100</b></p>	<p><b>REV</b></p> <p><b>A</b></p>
<p>SCALE: 1:1</p>		<p>FILENAME: 6313-07744-00100</p>	<p>SHEET 3 OF 6</p>			

**- WIRE CRIMP TERMINATION INFORMATION -**

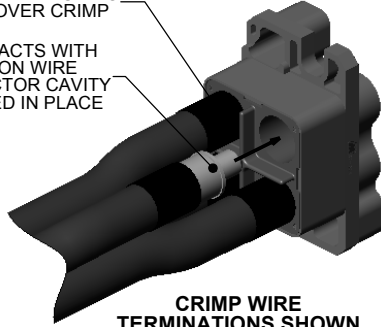


Ø12.4 [0.49]  
ACCEPTS POWERFLEX CABLE  
HV2/0-225-COLOR  
SIZE 2/0 AWG HIGH FLEX  
7x7x108/36 STRAND CONDUCTOR

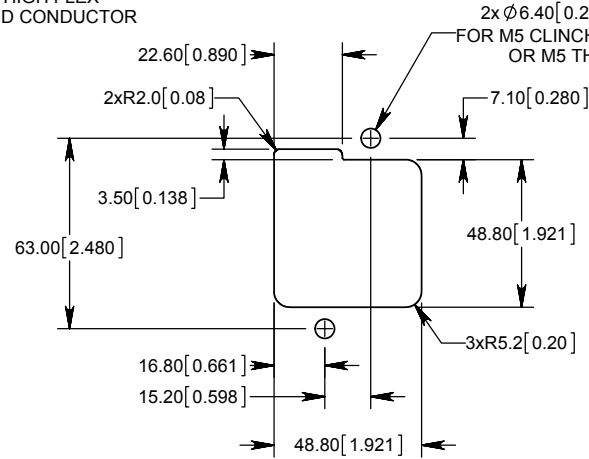
**CONNECTOR POPULATED  
WITH 2/0 AWG CRIMP CONTACTS**

OPTIONAL SHRINK TUBING  
INSTALLED OVER CRIMP

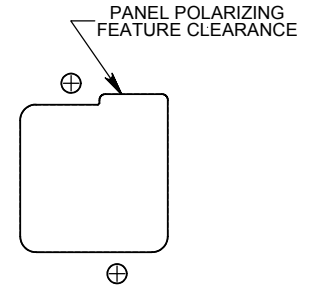
SLIDE CONTACTS WITH  
CRIMPED ON WIRE  
INTO CONNECTOR CAVITY  
UNTIL LOCKED IN PLACE



**CRIMP WIRE  
TERMINATIONS SHOWN**



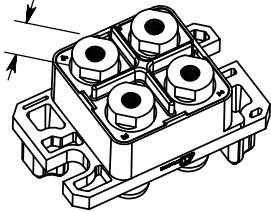
**SOCKET CONNECTOR PANEL CUTOUT  
COMPONENT SIDE VIEW  
ALLOWS 2.5MM [.10"]  
SIDE-TO-SIDE FREEDOM OF FLOAT**



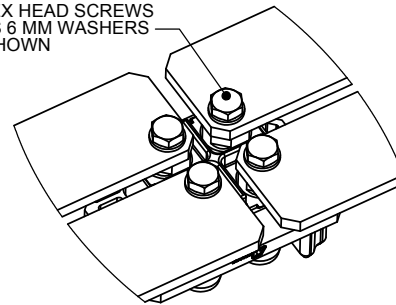
**PIN CONNECTOR PANEL CUTOUT  
COMPONENT SIDE VIEW  
MIRROR SOCKET IMAGE  
ALLOWS 2.5MM [.10"]  
SIDE-TO-SIDE FREEDOM OF FLOAT**

**- M6 THREADED TERMINATION INFORMATION-**

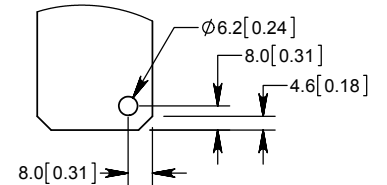
13.9 [0.55]  
ANTI-ROTATION  
13 MM WRENCH FLATS



BRASS M6 HEX HEAD SCREWS  
OVER BRASS 6 MM WASHERS  
SHOWN



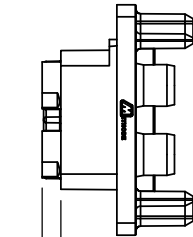
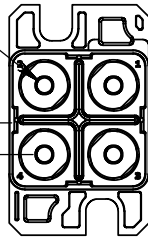
**38.1 x 4.8 MM BUS CONDUCTOR  
TERMINATION SHOWN**



**BUS CONDUCTOR  
RECOMMENDED ATTACHMENT  
HOLE SIZE & LOCATION**

M6x1.0 THREAD  
▽ 13.5 [0.53]

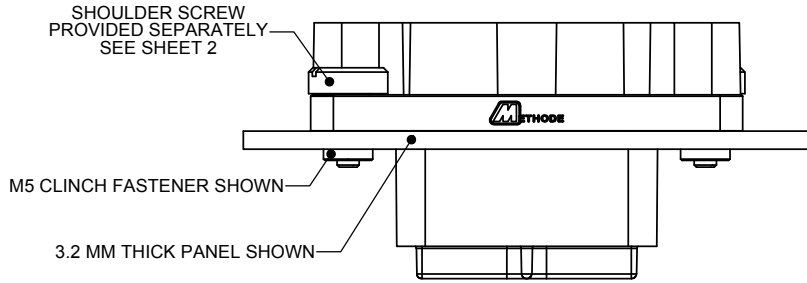
10.4 [0.41]  
CONTACT Q TO  
ISOLATION BARRIER



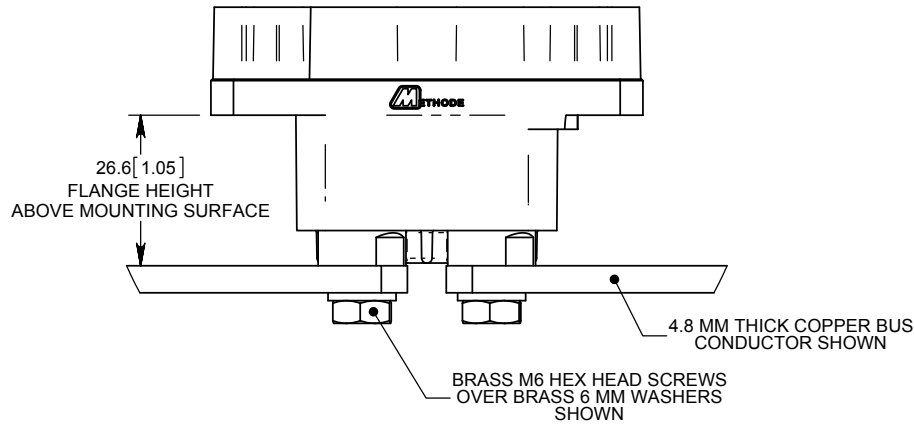
6.2 [0.24]  
EXPOSED CONTACT  
M6 TERMINATION

<p><b>THIRD ANGLE PROJECTION</b></p> <p>UNLESS OTHERWISE SPECIFIED DIMENSIONS ARE IN MILLIMETERS TOLERANCES ARE:</p> <table border="0"> <tr> <td><b>DECIMALS</b></td> <td><b>ANGLES</b></td> </tr> <tr> <td>X.X ± 0.2</td> <td>± 2.0</td> </tr> <tr> <td>X.XX ± 0.08</td> <td></td> </tr> <tr> <td>X.XXX ± 0.013</td> <td></td> </tr> </table> <p><b>SURFACE FINISH: N/A</b></p>	<b>DECIMALS</b>	<b>ANGLES</b>	X.X ± 0.2	± 2.0	X.XX ± 0.08		X.XXX ± 0.013		<p><b>NAME</b></p> <p>ORIG: R. Larsen</p> <p><b>DATE</b></p> <p>02/02/2015</p>	<p><b>METHODE ELECTRONICS, INC. POWER SOLUTIONS GROUP</b></p> <p>1750 Junction Avenue, San Jose, CA 95112 (408) 453-9500</p>
	<b>DECIMALS</b>	<b>ANGLES</b>								
	X.X ± 0.2	± 2.0								
	X.XX ± 0.08									
X.XXX ± 0.013										
<p><b>TOLERANCES</b></p>	<p><b>ENGR:</b></p> <p>R. Larsen</p> <p>02/02/2015</p>	<p><b>TITLE:</b></p> <p><b>USER DRAWING, M-QUAD FOUR SIZE 9.1 MM CONTACTS 2/0 AWG WIRE CRIMP &amp; M6 THREADS</b></p>								
<p><b>DECIMALS</b></p>	<p><b>CHECKED:</b></p> <p>H. Han</p> <p>02/02/2015</p>	<p><b>SIZE</b></p> <p><b>C</b></p>								
<p><b>ANGLES</b></p>	<p><b>PROPRIETARY AND CONFIDENTIAL NOTICE</b> ALL INFORMATION IN THIS DRAWING IS CONFIDENTIAL AND PROPRIETARY INFORMATION AND IS NOT TO BE DISTRIBUTED, COPIED, OR SHARED EXCEPT WITH PRIOR WRITTEN APPROVAL OF METHODE ELECTRONICS, INC. POWER SOLUTIONS GROUP.</p>	<p><b>DRAWING NUMBER:</b></p> <p><b>C6313-07744-00100</b></p> <p><b>REV</b></p> <p><b>A</b></p>								
<p>SCALE: 0.8:</p>		<p>FILENAME: 6313-07744-00100</p>	<p>SHEET 4 OF 6</p>							

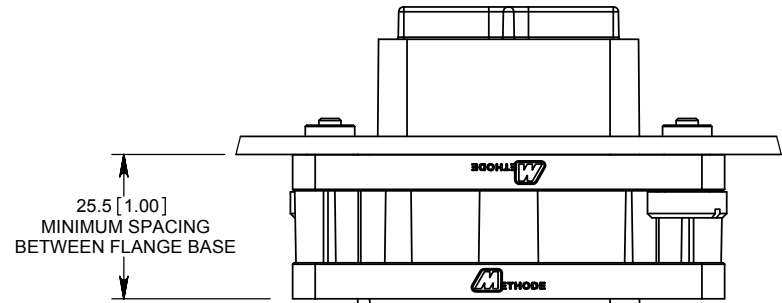
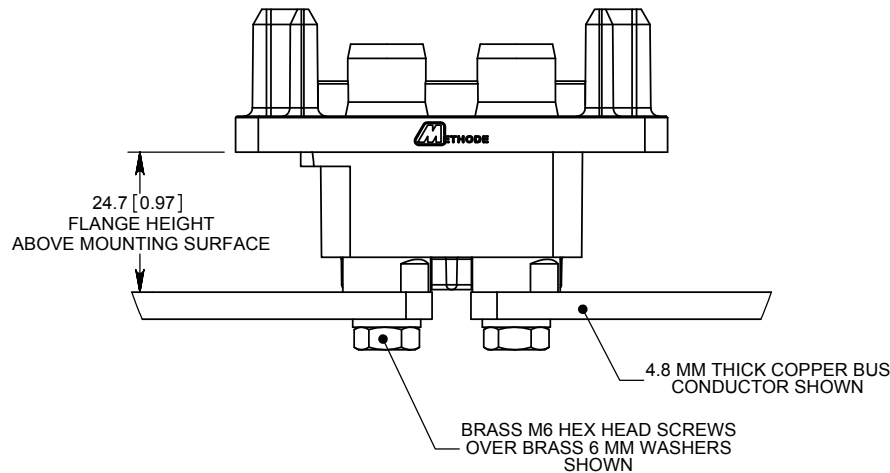
**- PANEL MOUNTED CONNECTOR -**



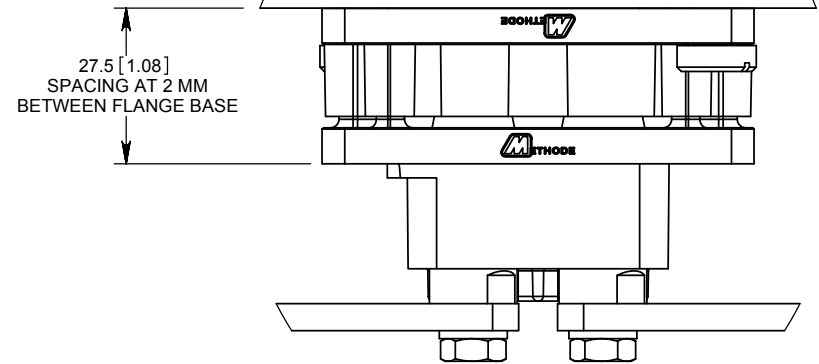
**- BUS MOUNTED PIN CONNECTOR -**



**- BUS MOUNTED SOCKET CONNECTOR -**

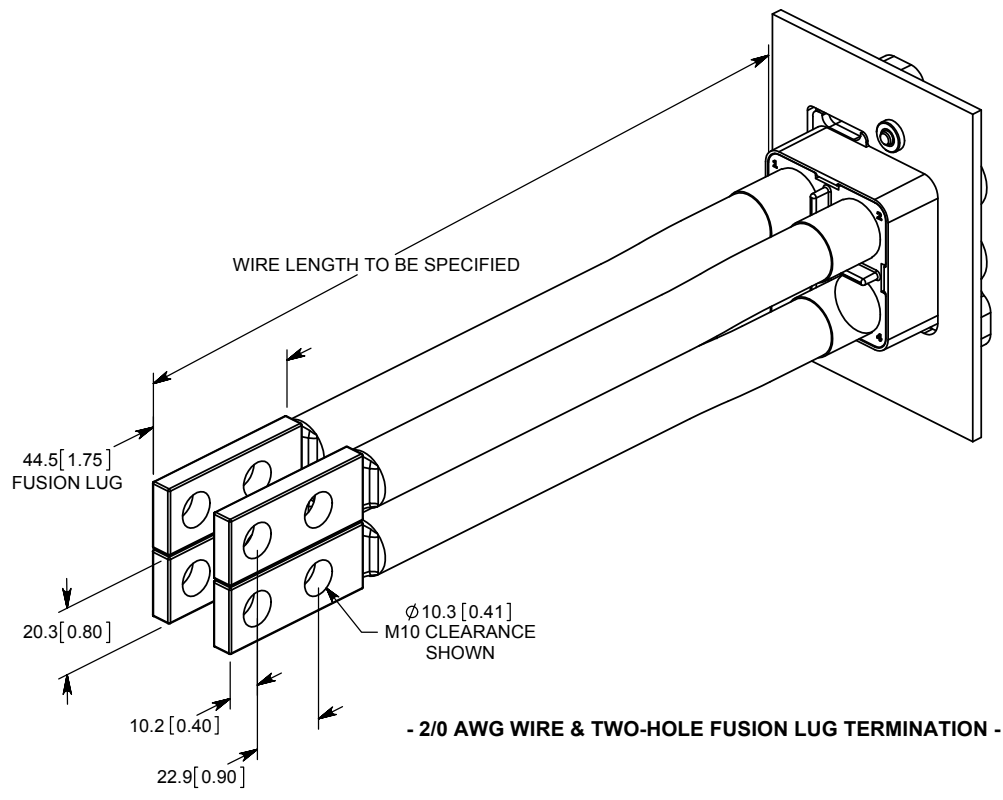


**FULLY MATED CONDITION**

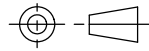



**2 MM OFFSET MATE CONDITION**

<p><b>THIRD ANGLE PROJECTION</b></p> <p>UNLESS OTHERWISE SPECIFIED DIMENSIONS ARE IN MILLIMETERS TOLERANCES ARE:</p> <p><b>DECIMALS</b>      <b>ANGLES</b></p> <p>X.X      ± 0.2      ± 2.0</p> <p>X.XX   ± 0.08</p> <p>X.XXX ± 0.013</p> <p><b>SURFACE FINISH: N/A</b></p>	<p><b>NAME</b></p> <p><i>ORIG:</i> R. Larsen</p>	<p><b>DATE</b></p> <p>02/02/2015</p>	<p><b>METHODE ELECTRONICS, INC.</b> <b>POWER SOLUTIONS GROUP</b></p> <p>1750 Junction Avenue, San Jose, CA 95112 (408) 453-9500</p>	
	<p><i>ENGR:</i> R. Larsen</p>	<p>02/02/2015</p>		<p><b>TITLE:</b></p> <p><b>USER DRAWING, M-QUAD</b> <b>FOUR SIZE 9.1 MM CONTACTS</b> <b>2/0 AWG WIRE CRIMP &amp; M6 THREADS</b></p>
	<p><i>CHECKED:</i> H. Han</p>	<p>02/02/2015</p>	<p><b>SIZE</b></p> <p><b>C</b></p>	<p><b>DRAWING NUMBER:</b></p> <p><b>C6313-07744-00100</b></p>
	<p><b>PROPRIETARY AND CONFIDENTIAL NOTICE</b> ALL INFORMATION IN THIS DRAWING IS CONFIDENTIAL AND PROPRIETARY INFORMATION AND IS NOT TO BE DISTRIBUTED, COPIED, OR SHARED EXCEPT WITH PRIOR WRITTEN APPROVAL OF METHODE ELECTRONICS, INC. POWER SOLUTIONS GROUP.</p>	<p><b>SCALE:</b> 1.5:1</p>	<p><b>FILENAME:</b> 6313-07744-00100</p>	<p><b>REV</b></p> <p><b>A</b></p>



NOTE:  
DIMENSIONS REFLECT STANDARD  
TWO-HOLE STANDARD FUSION LUGS

 <b>THIRD ANGLE PROJECTION</b> UNLESS OTHERWISE SPECIFIED DIMENSIONS ARE IN MILLIMETERS TOLERANCES ARE: DECIMALS      ANGLES X.X      ± 0.2      ± 2.0 X.XX   ± 0.08 X.XXX ± 0.013 SURFACE FINISH: N/A	<b>NAME</b> <i>ORIG:</i> R. Larsen	<b>DATE</b> 02/02/2015	 <b>METHODE ELECTRONICS, INC.</b> <b>POWER SOLUTIONS GROUP</b> 1750 Junction Avenue, San Jose, CA 95112 (408) 453-9500
	<i>ENGR:</i> R. Larsen	02/02/2015	
	<i>CHECKED:</i> H. Han	02/02/2015	<b>PROPRIETARY AND CONFIDENTIAL NOTICE</b> ALL INFORMATION IN THIS DRAWING IS CONFIDENTIAL AND PROPRIETARY INFORMATION AND IS NOT TO BE DISTRIBUTED, COPIED, OR SHARED EXCEPT WITH PRIOR WRITTEN APPROVAL OF METHODE ELECTRONICS, INC. POWER SOLUTIONS GROUP.
	<b>SIZE</b> <b>C</b>	<b>DRAWING NUMBER:</b> <b>C6313-07744-00100</b>	<b>REV</b> <b>A</b>
	SCALE: 1:1	FILENAME: 6313-07744-00100	SHEET 6 OF 6