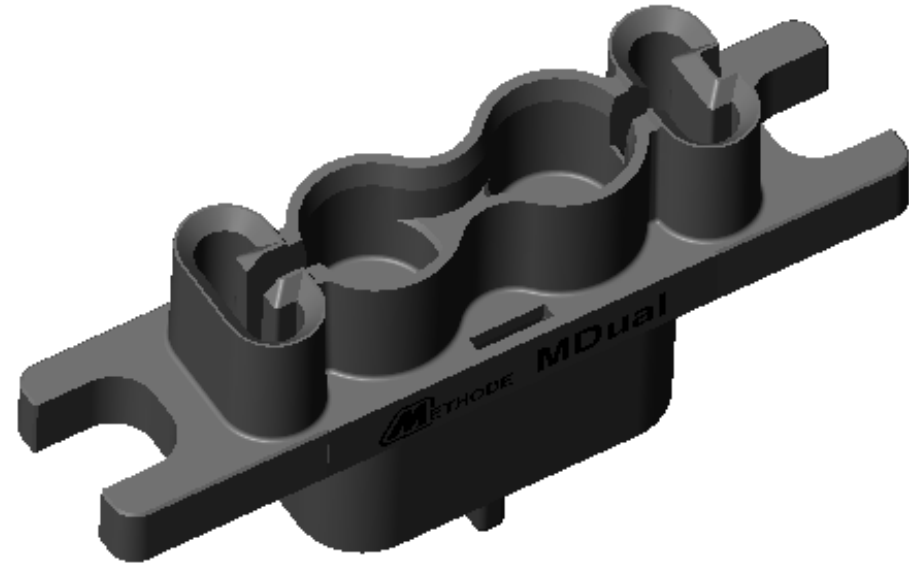


CUSTOMER	ASSEMBLY P/N	REV
METHODE ASSY P/N		

THIS DRAWING DOES NOT REPLACE THE CUSTOMER DRAWING
 USE THIS DRAWING AS A REFERENCE
 ALL DIMENSIONS NOT SPECIFIED ON THIS DWG ARE DRIVEN BY THE DXF FILE
 CREATED FROM THE 3D MODEL BY THE METHODE POWER SOLUTIONS GROUP.
 UNLESS OTHERWISE SPECIFIED, THE DEFAULT TOLERANCE IS: ±.005 IN.

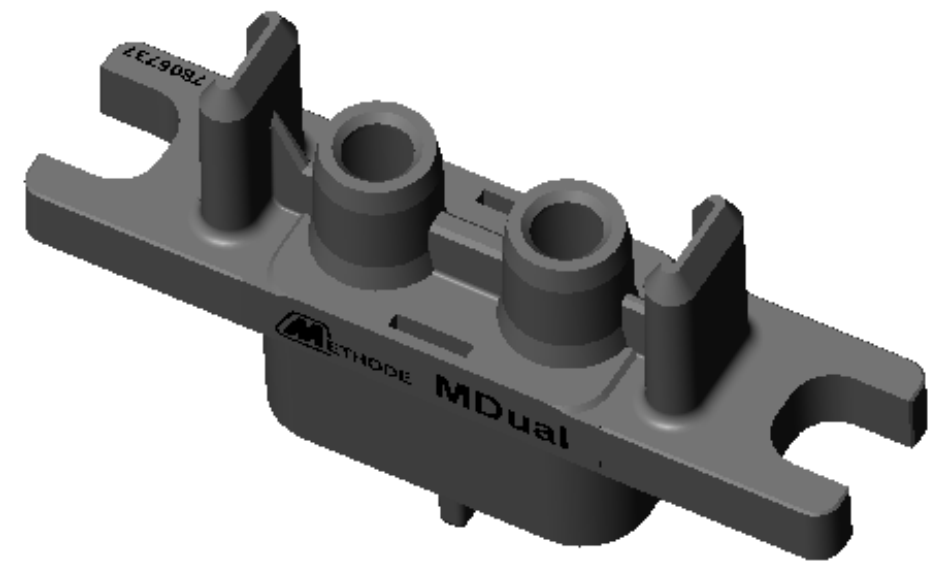
REVISION HISTORY						
REV.	VER.	ZONE	ECN NO.	DESCRIPTION	DATE	APPROVED
SK7	-	-	-	PRELIMINARY RELEASE	4-Aug-2017	JA

- PIN CONNECTOR -



**PN: 6316-07660-01100
 CONNECTOR INSULATOR HOUSING
 INCLUDING RETENTION SPRINGS
 NO CONTACTS INSTALLED**

- SOCKET CONNECTOR -



**PN: 6315-07657-01100
 CONNECTOR INSULATOR HOUSING
 INCLUDING RETENTION SPRINGS
 NO CONTACTS INSTALLED**

NOTES: UNLESS OTHERWISE SPECIFIED

- CONNECTOR NAMES AND PART NUMBERS:
 - NAME: PIN CONNECTOR HOUSING, M-DUAL BLIND MATE
 ACCOMMODATES SIZE 6.4 MM DIAMETER PINS & 4 GAUGE BARRELS
 PART NUMBER: 6316-07660-01100
 - NAME: SOCKET CONNECTOR HOUSING, M-DUAL BLIND MATE
 ACCOMMODATES SIZE 6.4 MM DIAMETER PINS & 4 GAUGE BARRELS
 PART NUMBER: 6315-07657-01100

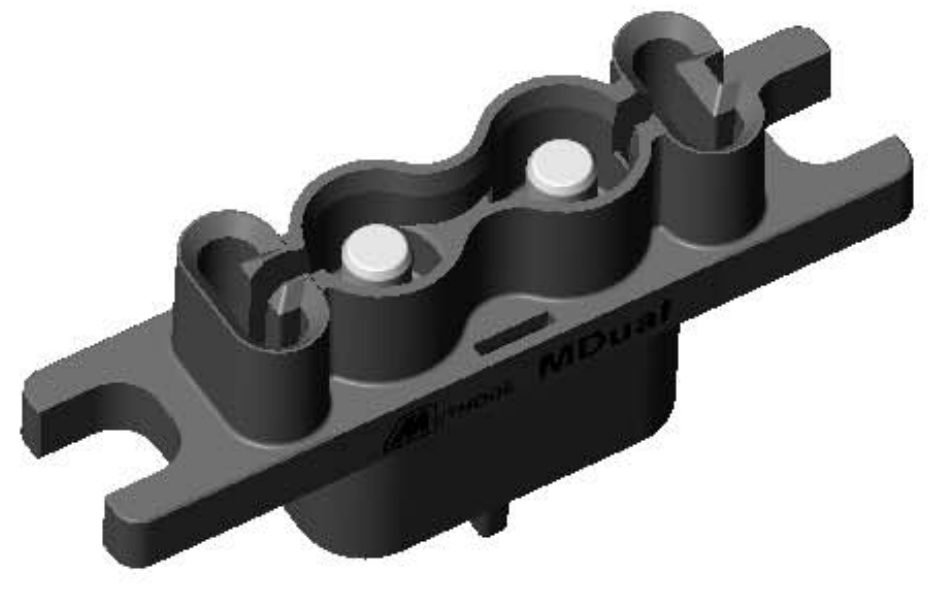
SEE SHEET 2 FOR CORRESPONDING CONTACT PART NUMBERS
- MATERIALS:
 - INSULATORS: THERMOPLASTIC, UL 94 V-0
 - SOCKET CONTACTS: COPPER ALLOY
 - PIN CONTACTS: COPPER ALLOY
- FINISHES:
 - SOCKET CONTACTS: SILVER PLATING OVER NICKEL UNDER PLATING
 - SOCKET BODIES: SILVER PLATING OVER NICKEL UNDER PLATING
 - PIN CONTACTS: SILVER PLATING OVER NICKEL UNDER PLATING
- REFERENCE DIMENSIONS IN PARENTHESIS (.XXX) ARE WITHOUT TOLERANCE AND USED FOR INFORMATION ONLY.
- OPERATIONAL CONDITIONS
 - * CONNECTOR GUIDEPOST GATHERING OF 2.5 MM [.10 INCH] RADIAL.
 - * RELIABLE MATE AT 2 MM [.08 INCH] OFFSET (SEE SHEET 5).
 - * PIN OR SOCKET CONNECTOR FLOAT OF 1.3 MM [.05 INCH] OFFSET FROM CENTER POSITION, WHEN MOUNTED USING THE SHOULDER SCREW SHOWN ON SHEET 5.
 - * TYPICAL CONNECTOR MATING FORCES TBD.

DO NOT SCALE		NAME	DATE	<p>Power Distribution Bus Bars Thermal Management Solutions Flexible Power Cables Power Connectors PowerRail</p>							
TOLERANCES		DRAWN	Vathsa 4-Aug-2017								
UNLESS OTHERWISE SPECIFIED: DIMENSIONS ARE IN MILLIMETERS(INCHES)		CHECKED	H. Han 4-Aug-2017								
<table border="0"> <tr> <td>DECIMALS</td> <td>ANGLES</td> </tr> <tr> <td>X.X ± 0.2</td> <td>± 2.0</td> </tr> <tr> <td>X.XX ± 0.08</td> <td></td> </tr> <tr> <td>X.XXX ± 0.013</td> <td></td> </tr> </table>		DECIMALS	ANGLES		X.X ± 0.2	± 2.0	X.XX ± 0.08		X.XXX ± 0.013		APPROVED
DECIMALS	ANGLES										
X.X ± 0.2	± 2.0										
X.XX ± 0.08											
X.XXX ± 0.013											
SIZE C	CAGE CODE 95354	PROPRIETARY AND CONFIDENTIAL THIS DOCUMENT CONTAINS CONFIDENTIAL AND PROPRIETARY INFORMATION THAT CANNOT BE REPRODUCED OR DIVULGED, IN WHOLE OR IN PART, WITHOUT WRITTEN AUTHORIZATION FROM METHODE ELECTRONICS, INC.		TITLE: USER DRAWING, M-DUAL SIZE 6.4 MM CONTACTS 4 & 8 AWG WIRE CRIMP & M5 THREADS DRAWING NUMBER C6313-07656-00100 METHODE P/N N/A FILENAME: 6313-07656-00100							
			REV	SK7							
			REV	-							
				SHEET 1 OF 6							

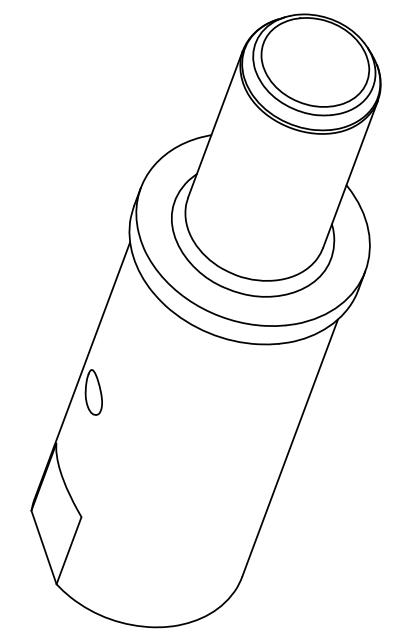
CUSTOMER	ASSEMBLY P/N	7 REV
METHODE ASSY P/N		

THIS DRAWING DOES NOT REPLACE THE CUSTOMER DRAWING
 USE THIS DRAWING AS A REFERENCE
 ALL DIMENSIONS NOT SPECIFIED ON THIS DWG ARE DRIVEN BY THE DXF FILE
 CREATED FROM THE 3D MODEL BY THE METHODE POWER SOLUTIONS GROUP.
 UNLESS OTHERWISE SPECIFIED, THE DEFAULT TOLERANCE IS: ±.005 IN.

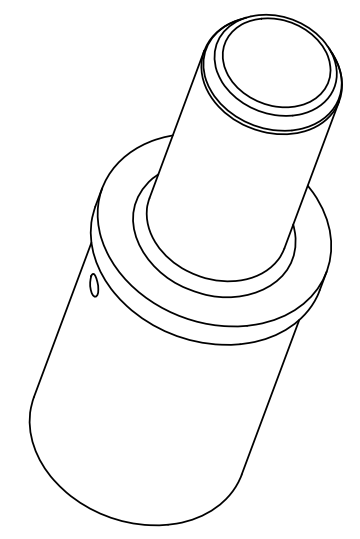
- PIN CONTACTS-



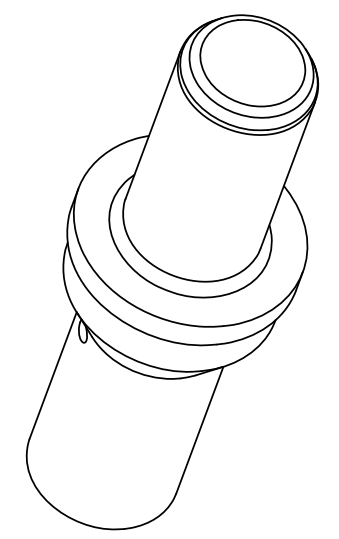
**ILLUSTRATED PIN CONNECTOR
 POPULATED WITH 6.4 MM
 PIN CONTACTS**



**PN: 9104-06655-02104
 6.4 MM PIN DIAMETER
 M5 THREAD TERMINATION**



**PN: 9104-06454-02104
 6.4 MM PIN DIAMETER
 4 AWG CRIMP TERMINATION**

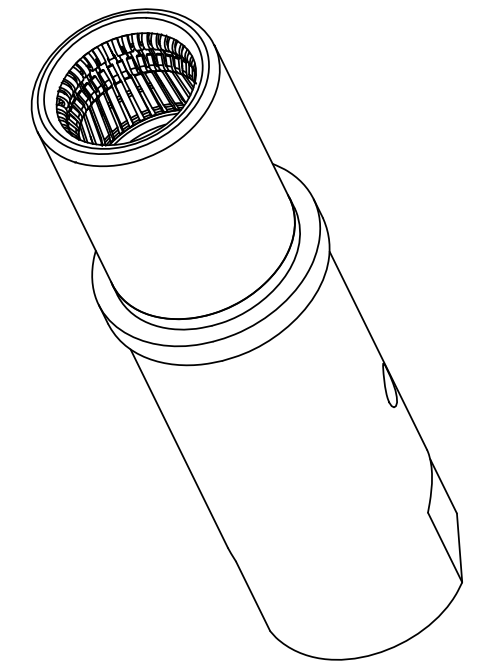


**PN: 9104-07303-02104
 6.4 MM PIN DIAMETER
 8 AWG CRIMP TERMINATION**

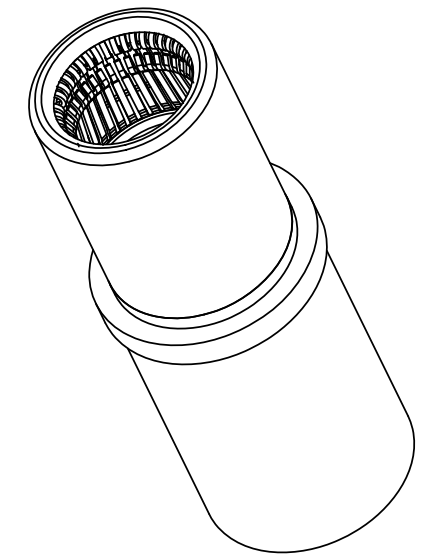
- SOCKET CONTACTS-



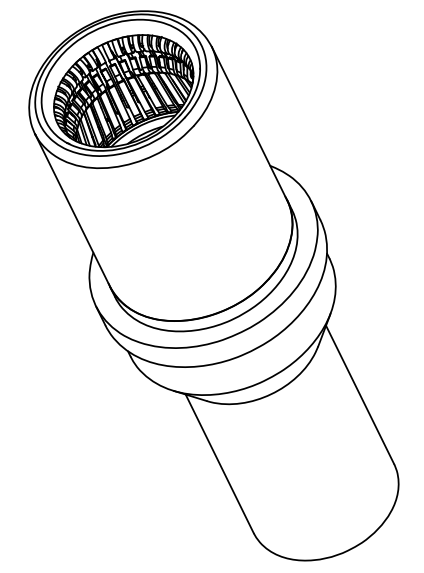
**ILLUSTRATED SOCKET CONNECTOR
 POPULATED WITH 6.4 MM
 PIN CONTACTS**



**PN: 9303-06656-01104
 POWERBUD 6.4 MM PIN DIAMETER
 M5 THREADED TERMINATION**



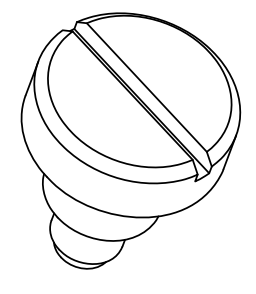
**PN: 9303-06442-01104
 POWERBUD 6.4 MM PIN DIAMETER
 4 AWG CRIMP TERMINATION**



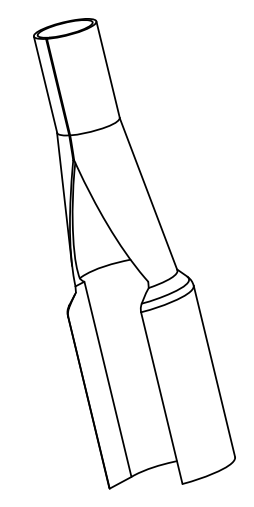
**PN: 9303-07304-01104
 POWERBUD 6.4 MM PIN DIAMETER
 8 AWG CRIMP TERMINATION**

- CONTACT REMOVAL TOOL -

- MOUNTING SHOULDER SCREW -



**PN: 9119-01680-02103
 M5 THREAD**



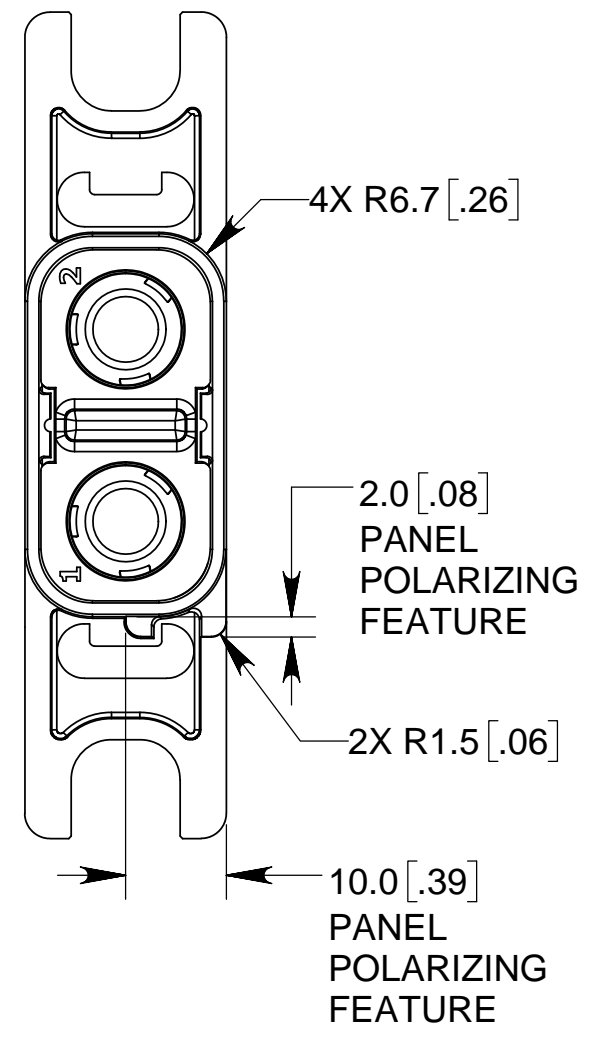
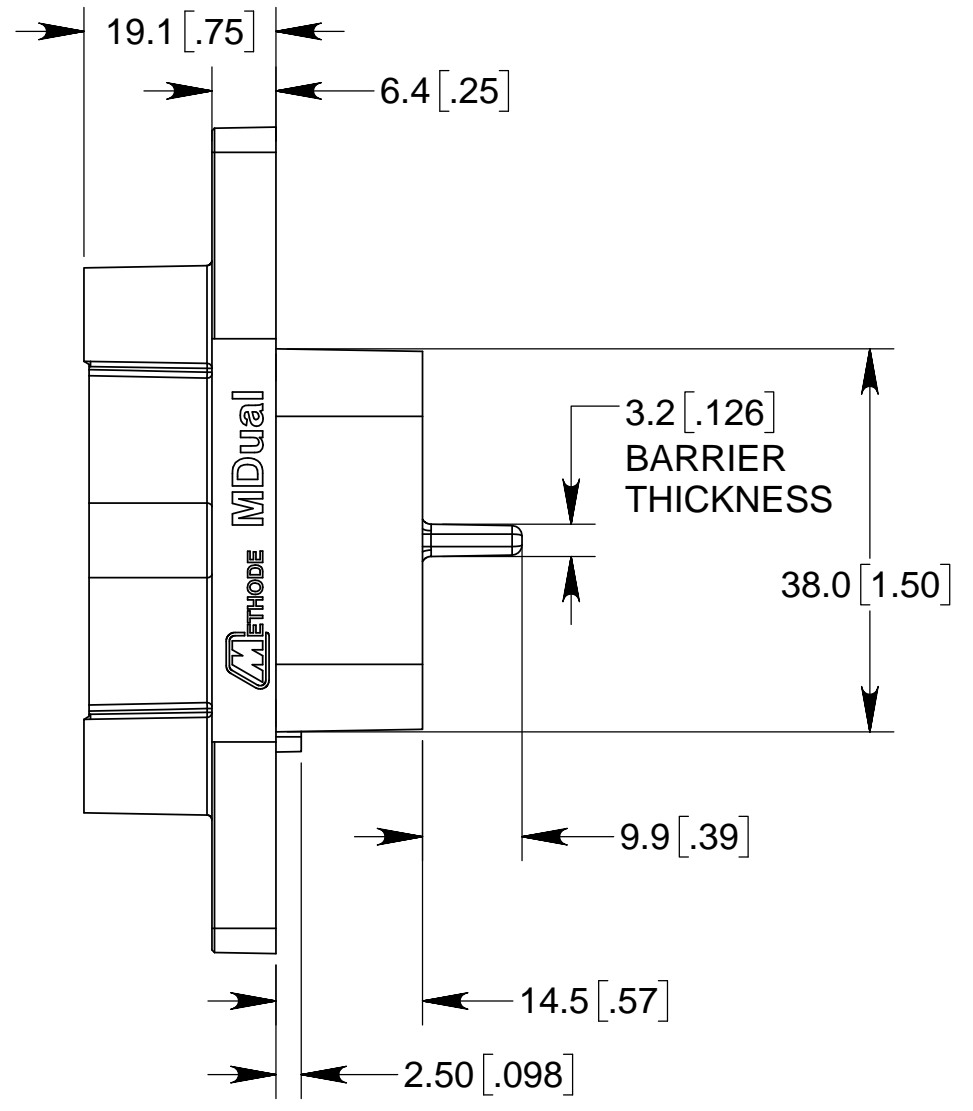
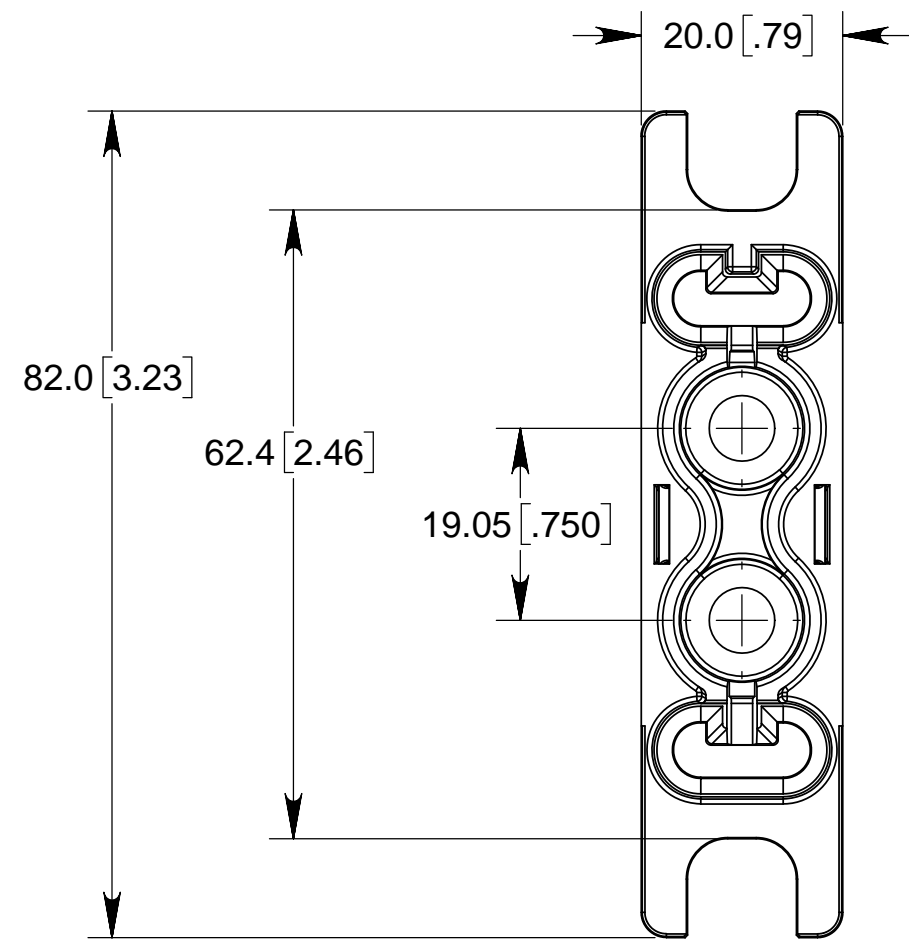
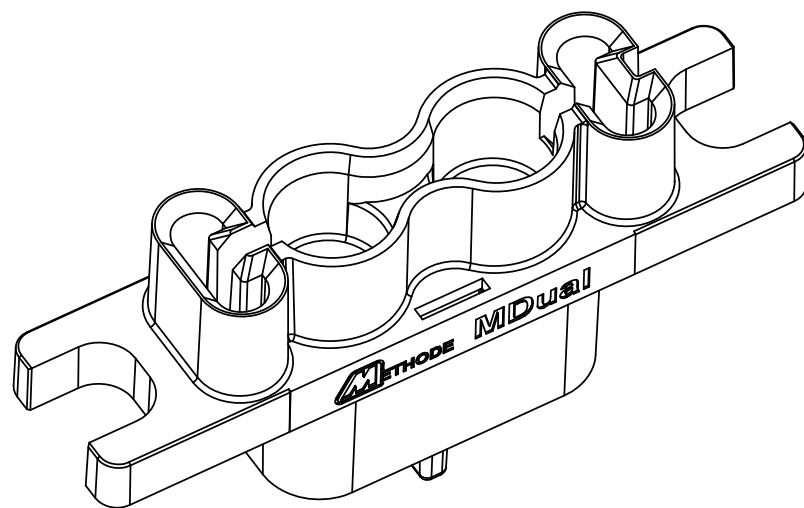
**PN: 7208-00228-02300
 SIZE 4 GAUGE BARREL**

DO NOT SCALE		NAME	DATE	 <small>Power Distribution Bus Bars Thermal Management Solutions Flexible Power Cables Power Connectors PowerRail</small>
TOLERANCES		DRAWN	4-Aug-2017	
UNLESS OTHERWISE SPECIFIED: <small>DIMENSIONS ARE IN MILLIMETERS(INCHES)</small>		CHECKED	4-Aug-2017	
DECIMALS	ANGLES	APPROVED	4-Aug-2017	<small>PROPRIETARY AND CONFIDENTIAL</small> THIS DOCUMENT CONTAINS CONFIDENTIAL AND PROPRIETARY INFORMATION THAT CANNOT BE REPRODUCED OR DIVULGED, IN WHOLE OR IN PART, WITHOUT WRITTEN AUTHORIZATION FROM METHODE ELECTRONICS, INC.
X.X ± 0.2	± 2.0	TITLE: USER DRAWING, M-DUAL SIZE 6.4 MM CONTACTS 4 & 8 AWG WIRE CRIMP & M5 THREADS DRAWING NUMBER C6313-07656-00100		
X.XX ± 0.08		METHODE P/N N/A		REV SK7
X.XXX ± 0.013		SIZE C CAGE CODE 95354		FILENAME: 6313-07656-00100 SHEET 2 OF 6

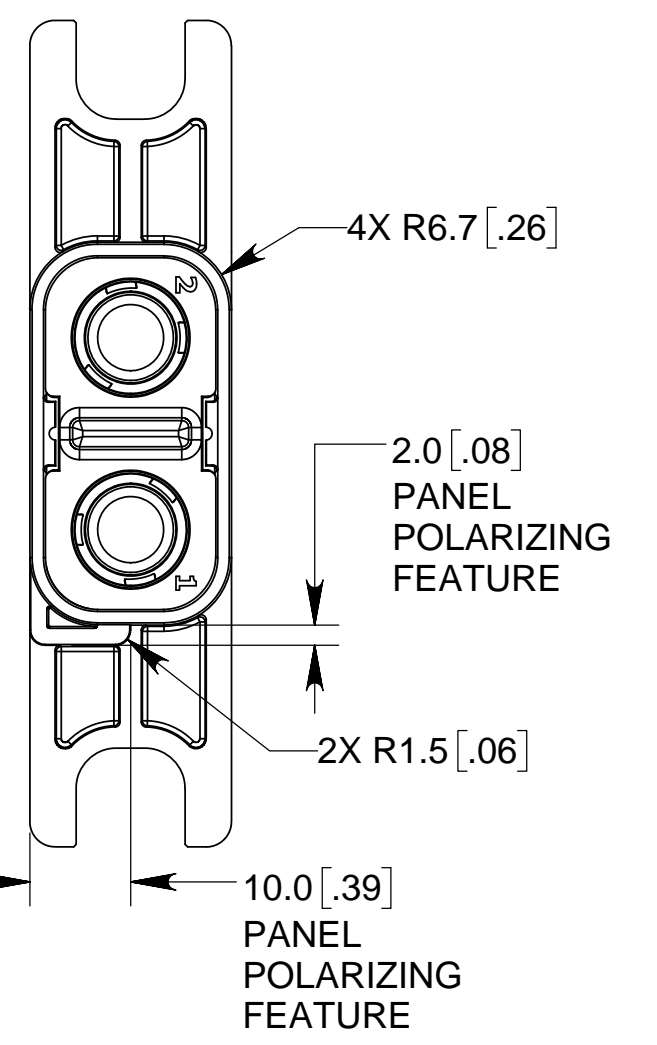
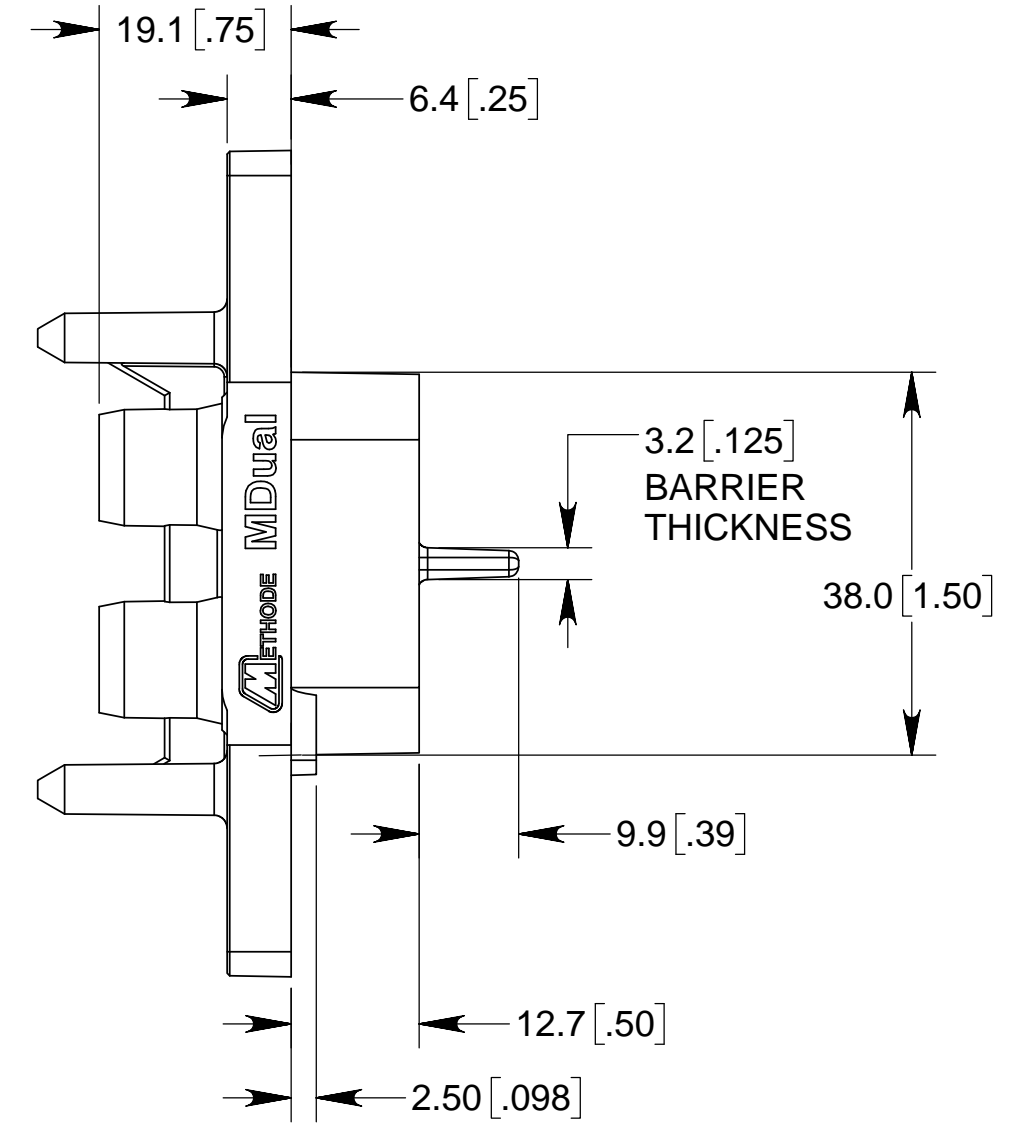
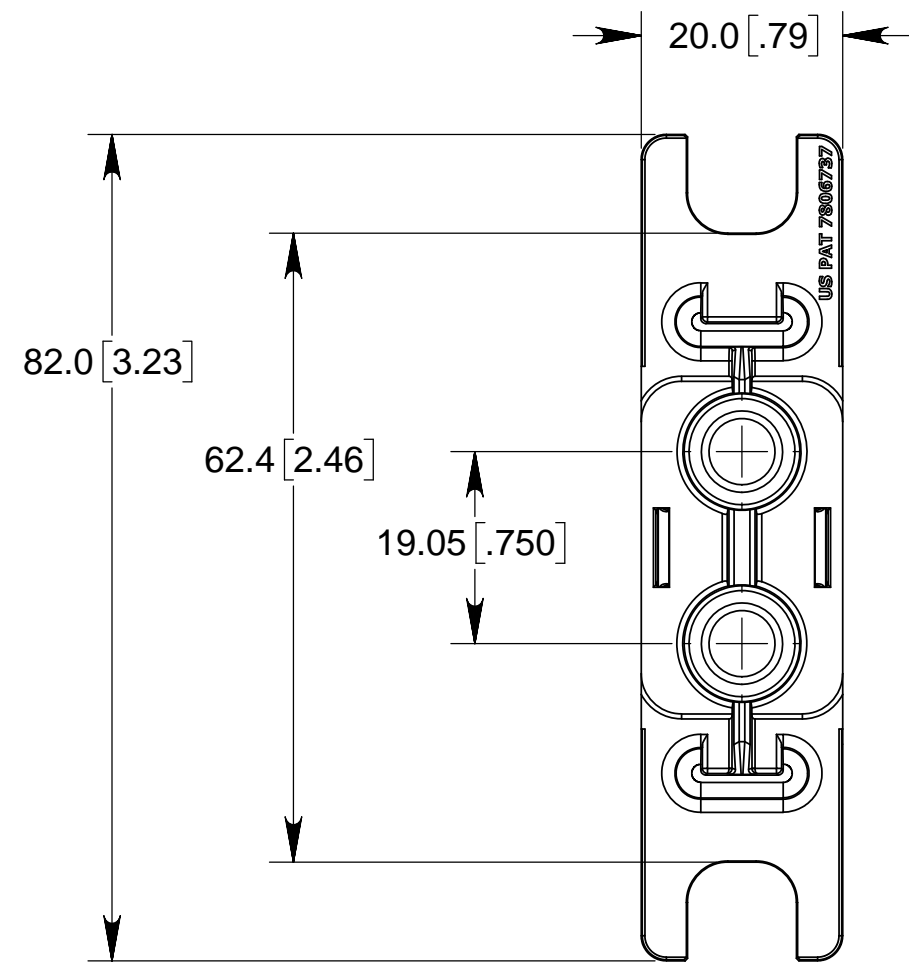
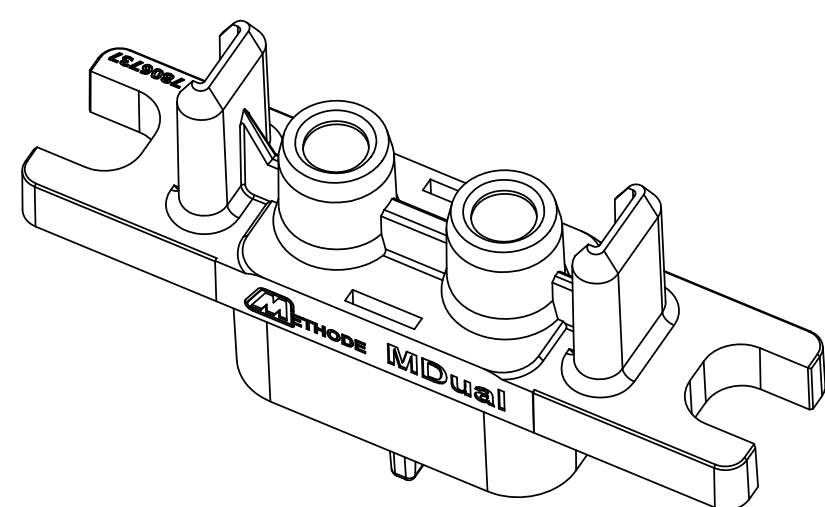
CUSTOMER	ASSEMBLY P/N	REV
METHODE ASSY P/N		

THIS DRAWING DOES NOT REPLACE THE CUSTOMER DRAWING
 USE THIS DRAWING AS A REFERENCE
 ALL DIMENSIONS NOT SPECIFIED ON THIS DWG ARE DRIVEN BY THE DXF FILE
 CREATED FROM THE 3D MODEL BY THE METHODE POWER SOLUTIONS GROUP.
 UNLESS OTHERWISE SPECIFIED, THE DEFAULT TOLERANCE IS: ±.005 IN.

**PIN CONNECTOR
 INSULATOR HOUSING**



**SOCKET CONNECTOR
 INSULATOR HOUSING**

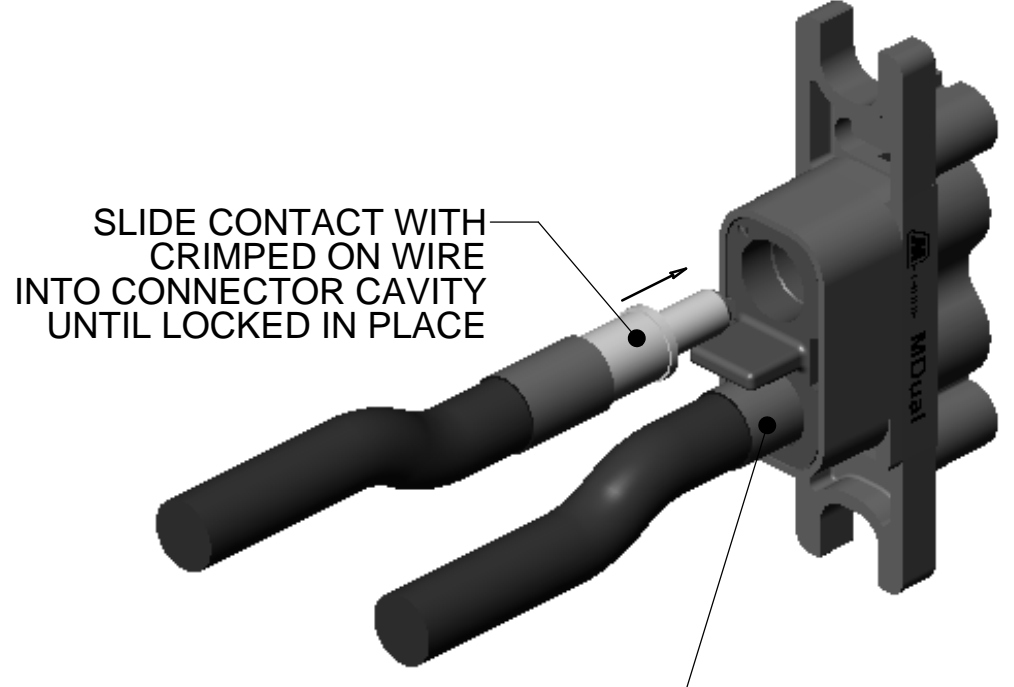
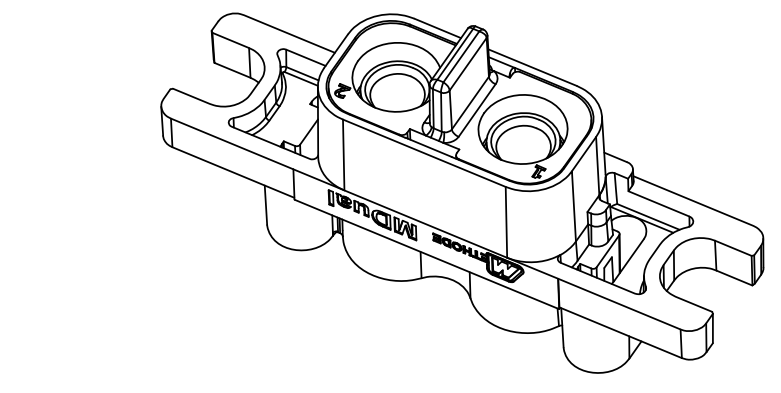


DO NOT SCALE		NAME	DATE	<p>Power Distribution Bus Bars Thermal Management Solutions Flexible Power Cables Power Connectors PowerRail</p>							
TOLERANCES		DRAWN	Vathsa 4-Aug-2017								
UNLESS OTHERWISE SPECIFIED: DIMENSIONS ARE IN MILLIMETERS(INCHES)		CHECKED	H. Han 4-Aug-2017								
<table border="0"> <tr> <td>DECIMALS</td> <td>ANGLES</td> </tr> <tr> <td>X.X ± 0.2</td> <td>± 2.0</td> </tr> <tr> <td>X.XX ± 0.08</td> <td></td> </tr> <tr> <td>X.XXX ± 0.013</td> <td></td> </tr> </table>		DECIMALS	ANGLES		X.X ± 0.2	± 2.0	X.XX ± 0.08		X.XXX ± 0.013		APPROVED
DECIMALS	ANGLES										
X.X ± 0.2	± 2.0										
X.XX ± 0.08											
X.XXX ± 0.013											
SIZE C	CAGE CODE 95354	PROPRIETARY AND CONFIDENTIAL THIS DOCUMENT CONTAINS CONFIDENTIAL AND PROPRIETARY INFORMATION THAT CANNOT BE REPRODUCED OR DIVULGED, IN WHOLE OR IN PART, WITHOUT WRITTEN AUTHORIZATION FROM METHODE ELECTRONICS, INC.		TITLE: USER DRAWING, M-DUAL SIZE 6.4 MM CONTACTS 4 & 8 AWG WIRE CRIMP & M5 THREADS DRAWING NUMBER C6313-07656-00100							
		METHODE P/N N/A	REV -	DRAWING NUMBER C6313-07656-00100							
		FILENAME: 6313-07656-00100	SHEET 3 OF 6								

CUSTOMER	ASSEMBLY P/N	REV
METHODE ASSY P/N		

THIS DRAWING DOES NOT REPLACE THE CUSTOMER DRAWING
 USE THIS DRAWING AS A REFERENCE
 ALL DIMENSIONS NOT SPECIFIED ON THIS DWG ARE DRIVEN BY THE DXF FILE
 CREATED FROM THE 3D MODEL BY THE METHODE POWER SOLUTIONS GROUP.
 UNLESS OTHERWISE SPECIFIED, THE DEFAULT TOLERANCE IS: ±.005 IN.

- WIRE CRIMP TERMINATION INFORMATION -

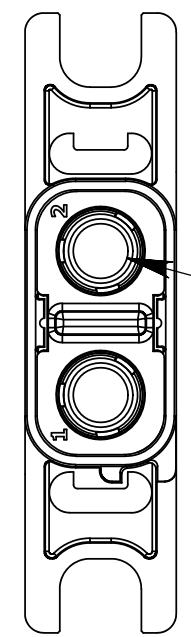


SLIDE CONTACT WITH CRIMPED ON WIRE INTO CONNECTOR CAVITY UNTIL LOCKED IN PLACE

OPTIONAL SHRINK TUBING INSTALLED OVER CRIMP

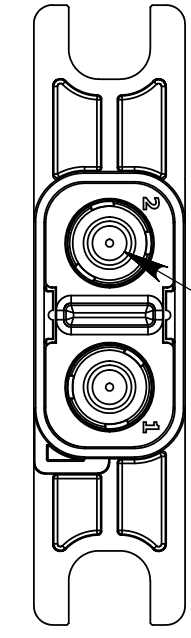
CRIMP WIRE TERMINATIONS SHOWN

CONNECTOR POPULATED WITH 4 AWG CRIMP CONTACTS

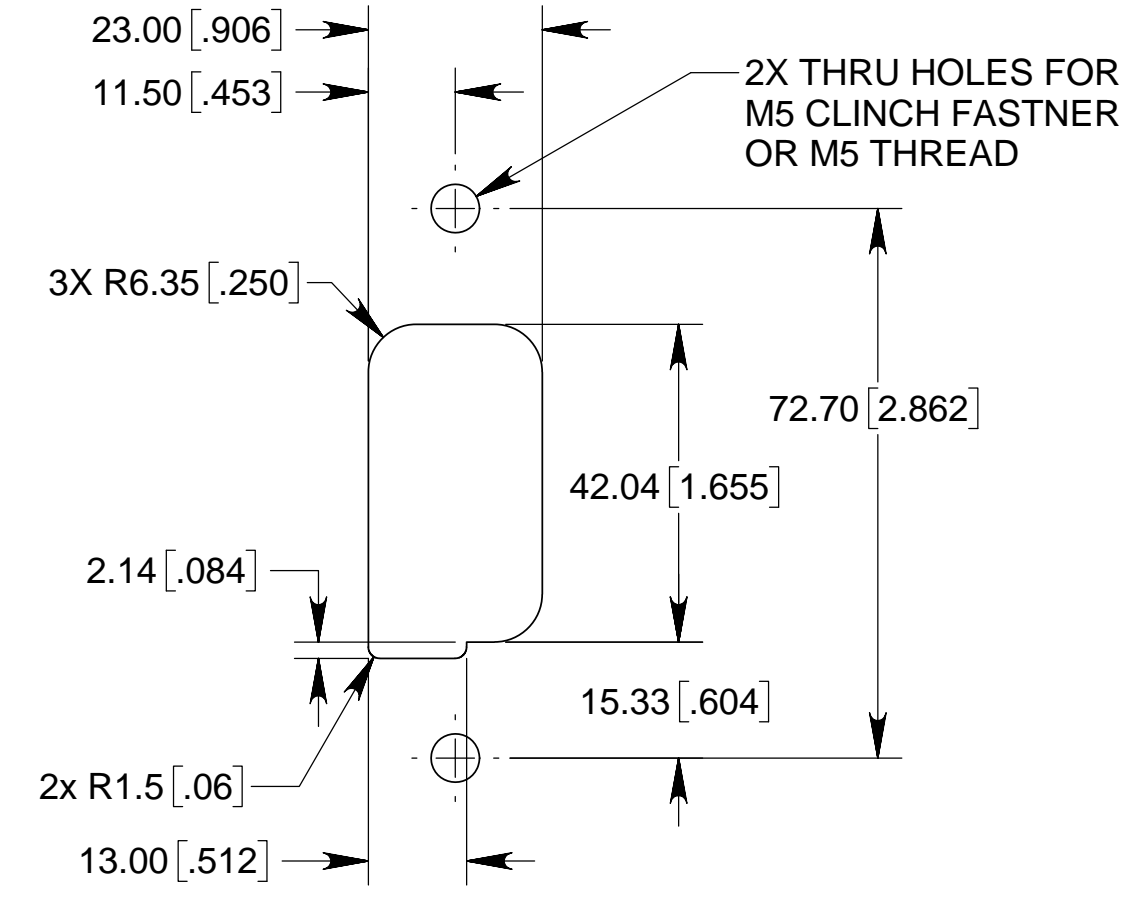


Ø7.2 [.29] ∇13.0 [.50]
 ACCEPTS POWERFLEX CABLE HV4-105-COLOR
 SIZE 4 AWG HIGH FLEX 7X7X34/36 STRAND CONDUCTOR

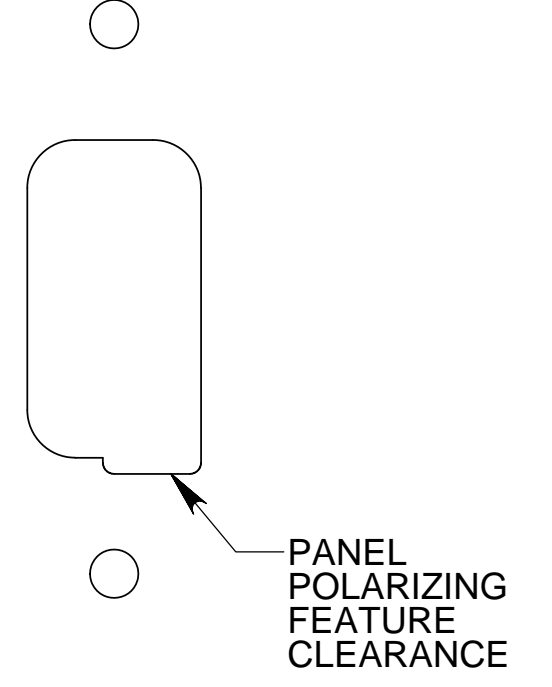
CONNECTOR POPULATED WITH 8 AWG CRIMP CONTACTS



Ø4.5 [.18] ∇11.4 [.45]
 ACCEPTS POWERFLEX CABLE HV8-55-COLOR
 SIZE 8 AWG HIGH FLEX 7X95/36 STRAND CONDUCTOR

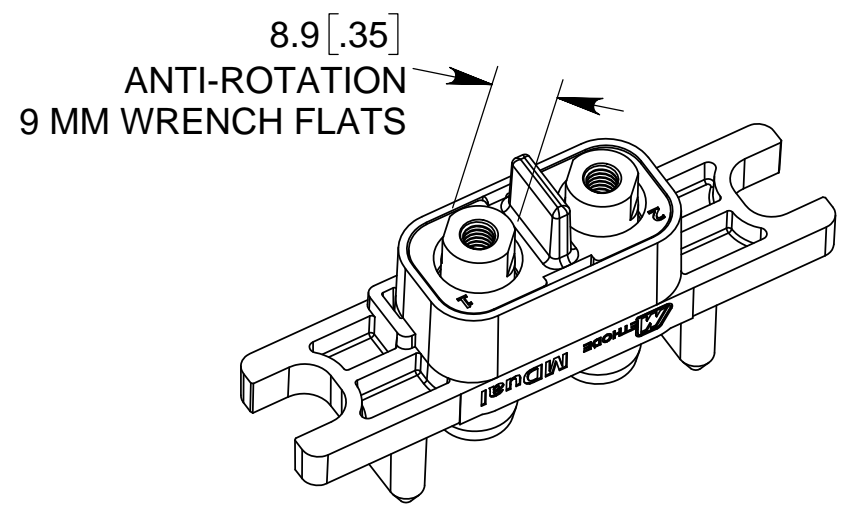


**PIN CONNECTOR PANEL CUTOUT COMPONENT SIDE VIEW
 ALLOWS TOTAL 2.5 MM [.10"]
 SIDE-TO-SIDE FREEDOM OF FLOAT**

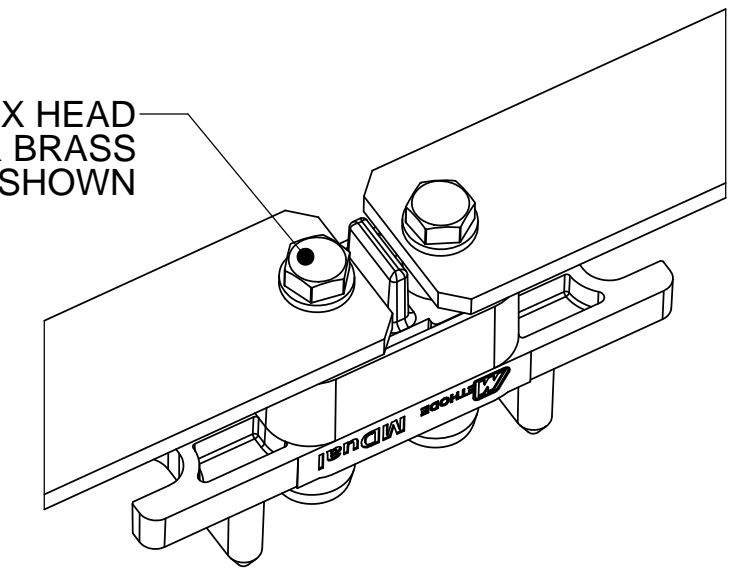


**SOCKET CONNECTOR PANEL CUTOUT COMPONENT SIDE VIEW
 MIRROR PIN IMAGE
 ALLOWS TOTAL 2.5 MM [.10"]
 SIDE-TO-SIDE FREEDOM OF FLOAT**

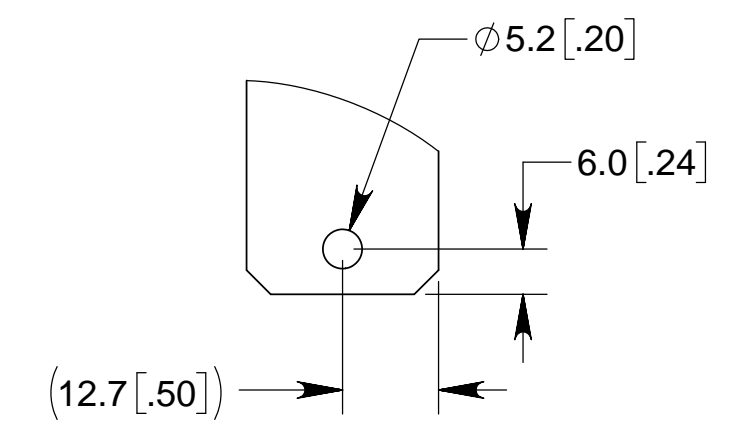
- M5 THREADED TERMINATION INFORMATION -



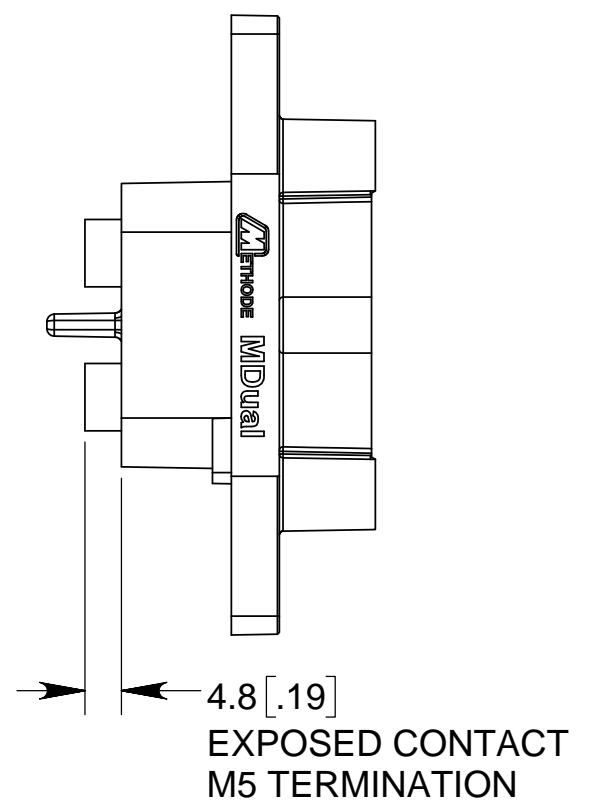
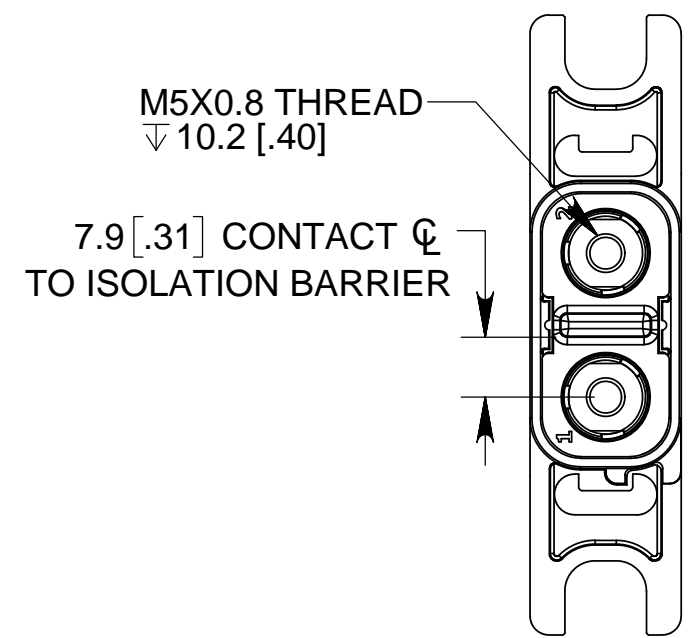
BRASS M5 HEX HEAD SCREWS OVER BRASS M5 WASHERS SHOWN



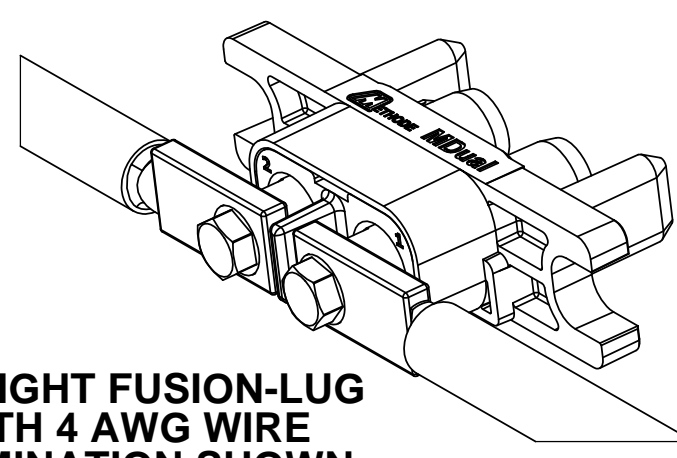
25 x 3.2MM BUS CONDUCTOR DOUBLE POLE TERMINATION SHOWN



BUS CONDUCTOR RECOMMENDED ATTACHMENT HOLE SIZE & LOCATION



STRAIGHT FUSION-LUG WITH 4 AWG WIRE TERMINATION SHOWN

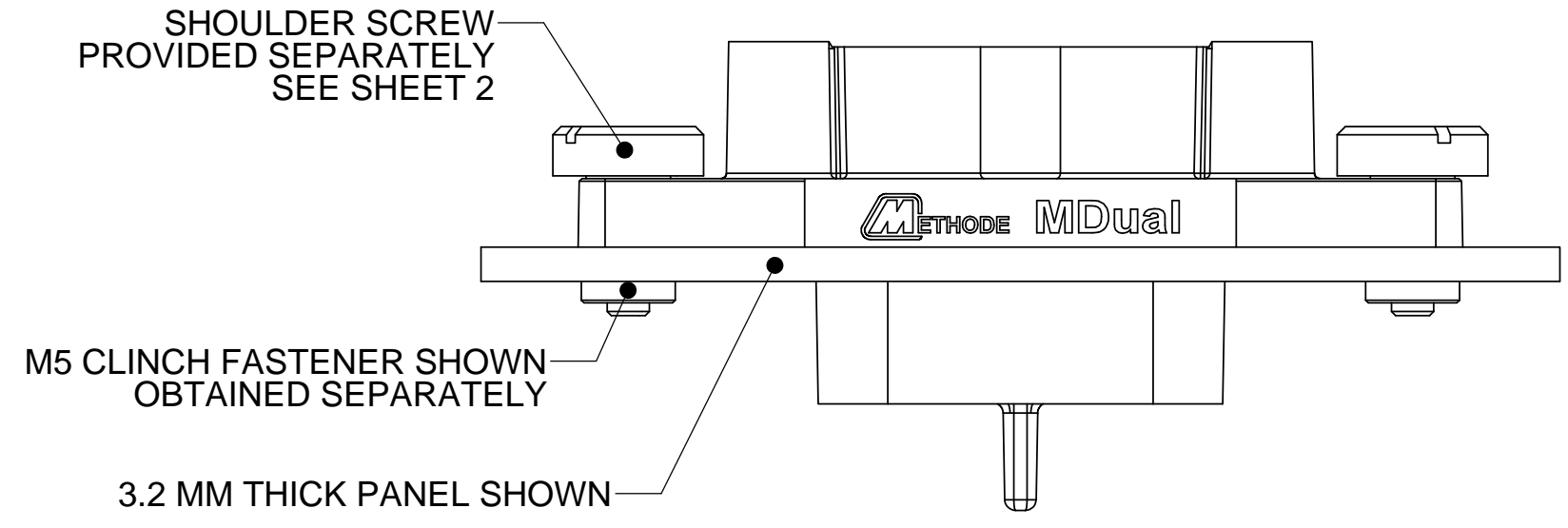


DO NOT SCALE		NAME	DATE	
TOLERANCES		DRAWN	Vathsa 4-Aug-2017	
UNLESS OTHERWISE SPECIFIED: DIMENSIONS ARE IN MILLIMETERS(INCHES)		CHECKED	H. Han 4-Aug-2017	
DECIMALS ±0.2 X.XX ±0.08 X.XXX ±0.013		APPROVED	J. August 4-Aug-2017	TITLE: USER DRAWING, M-DUAL SIZE 6.4 MM CONTACTS 4 & 8 AWG WIRE CRIMP & M5 THREADS DRAWING NUMBER C6313-07656-00100 METHODE P/N N/A FILENAME: 6313-07656-00100
ANGLES ±2.0		PROPRIETARY AND CONFIDENTIAL THIS DOCUMENT CONTAINS CONFIDENTIAL AND PROPRIETARY INFORMATION THAT CANNOT BE REPRODUCED OR DIVULGED, IN WHOLE OR IN PART, WITHOUT WRITTEN AUTHORIZATION FROM METHODE ELECTRONICS, INC.		REV SK7 REV - SHEET 4 OF 6
SIZE C	CAGE CODE 95354			

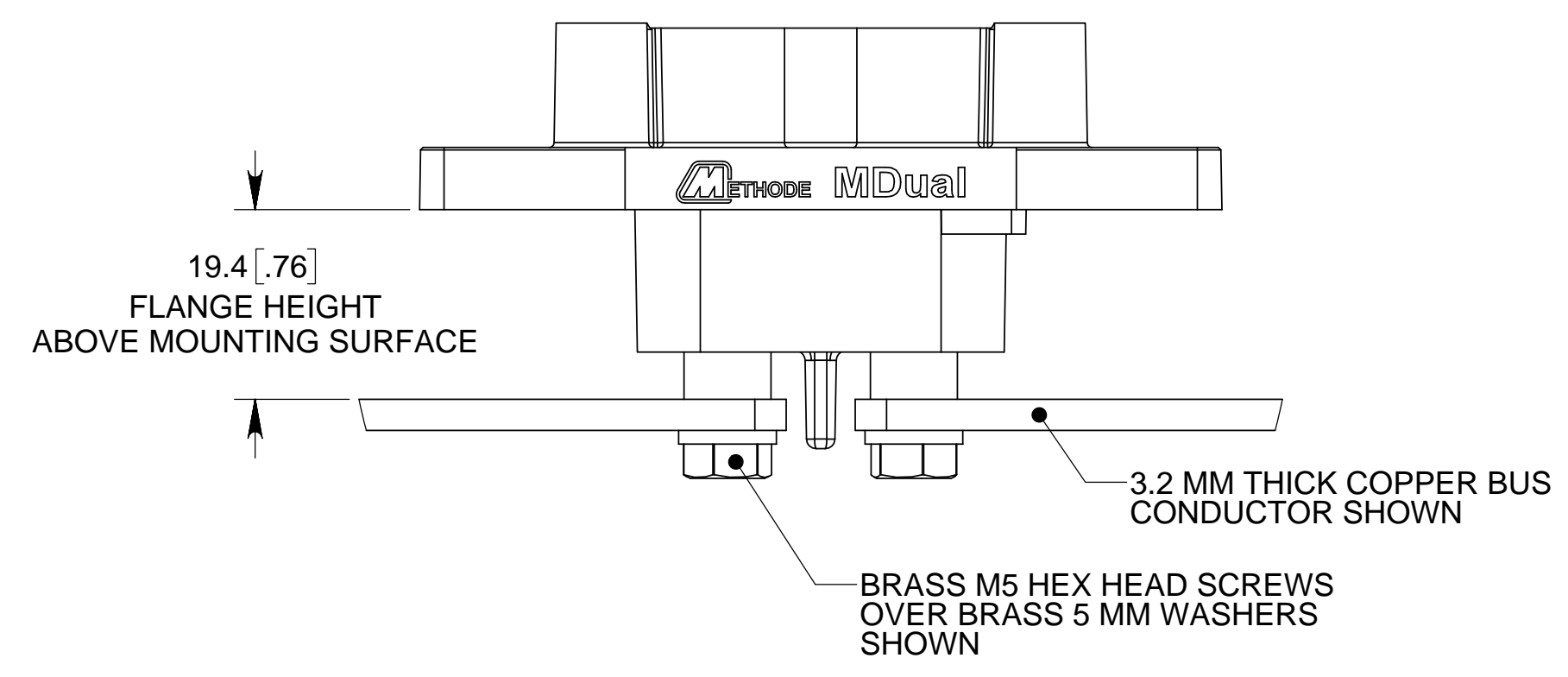
CUSTOMER	ASSEMBLY P/N	REV
METHODE ASSY P/N		

THIS DRAWING DOES NOT REPLACE THE CUSTOMER DRAWING
 USE THIS DRAWING AS A REFERENCE
 ALL DIMENSIONS NOT SPECIFIED ON THIS DWG ARE DRIVEN BY THE DXF FILE
 CREATED FROM THE 3D MODEL BY THE METHODE POWER SOLUTIONS GROUP.
 UNLESS OTHERWISE SPECIFIED, THE DEFAULT TOLERANCE IS: ±.005 IN.

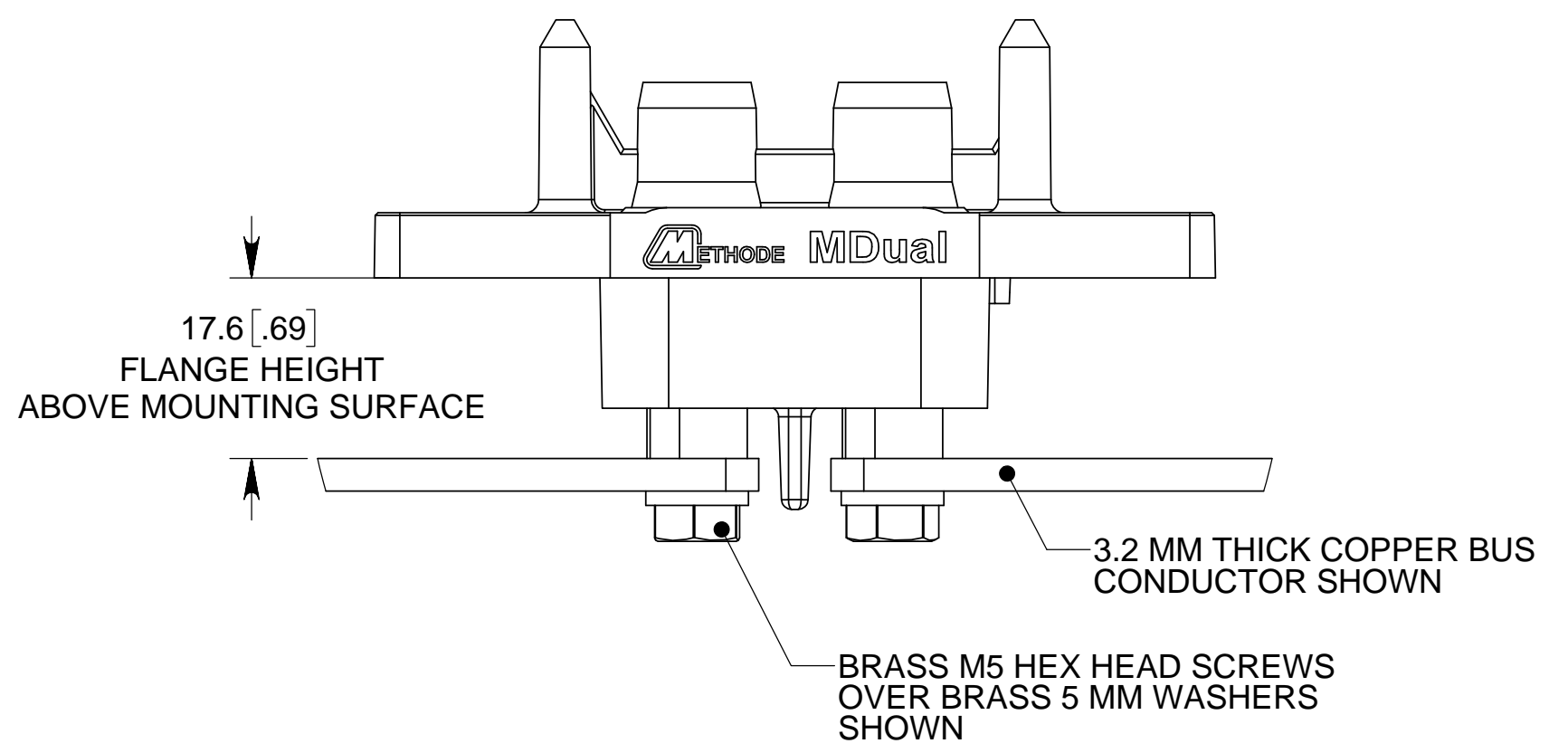
- PANEL MOUNTED PIN CONNECTOR -



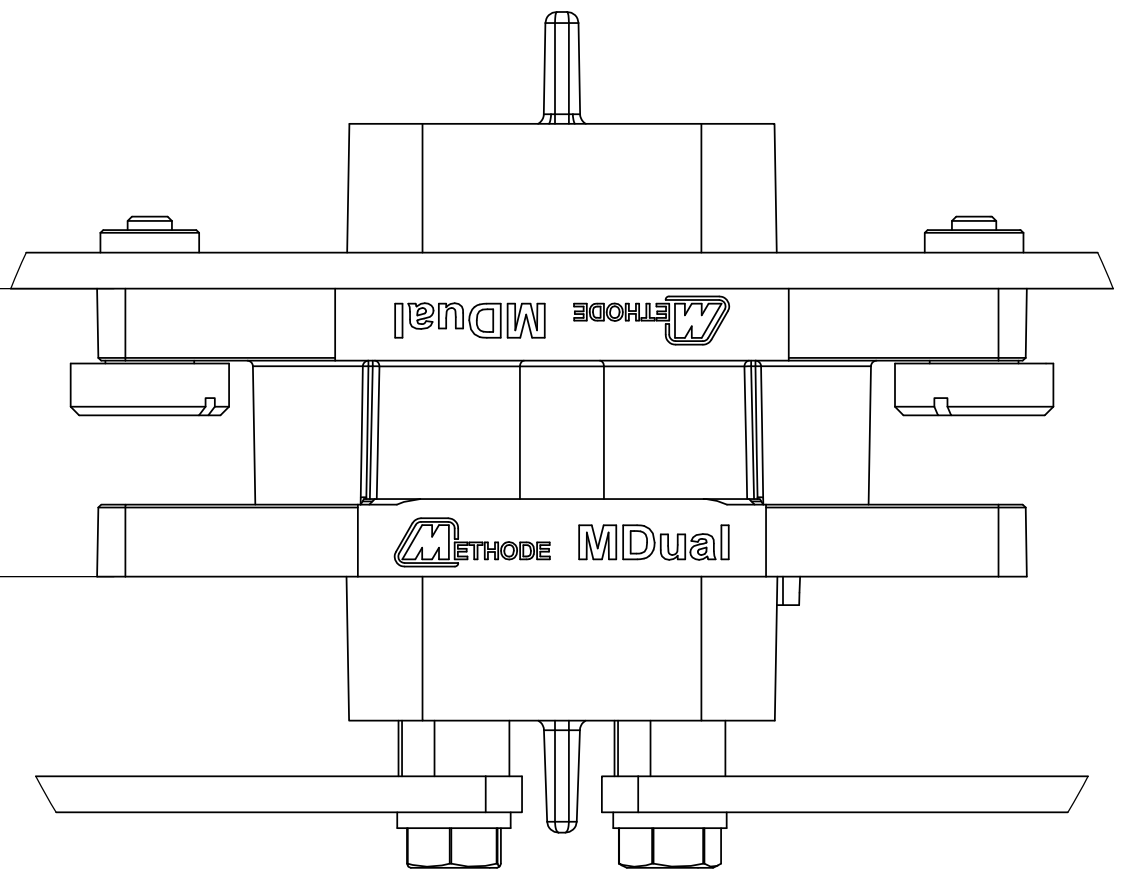
- BUS MOUNTED PIN CONNECTOR -



- BUS MOUNTED SOCKET CONNECTOR-

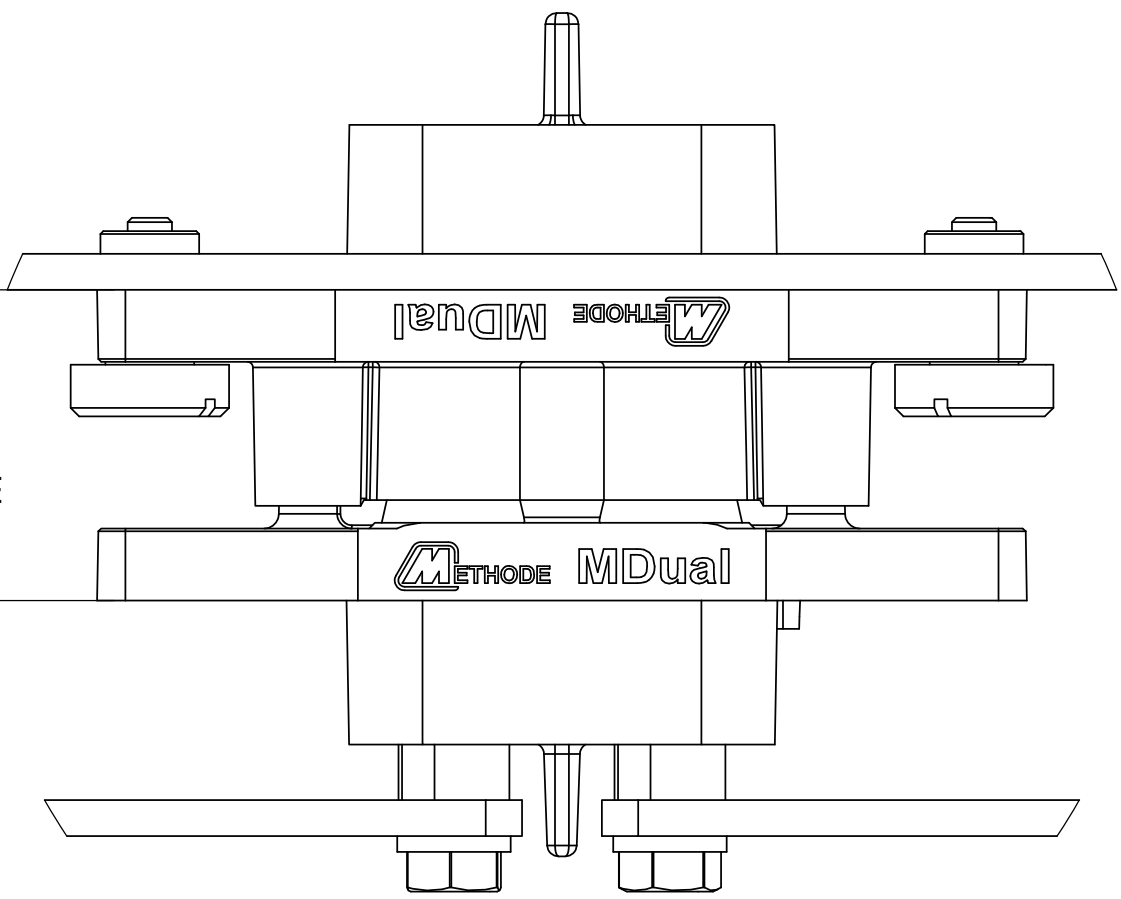


25.4 [1.00]
 MINIMUM SPACING
 BETWEEN FLANGE BASE




FULLY MATED CONDITION

27.4 [1.08]
 MINIMUM SPACING
 BETWEEN FLANGE BASE



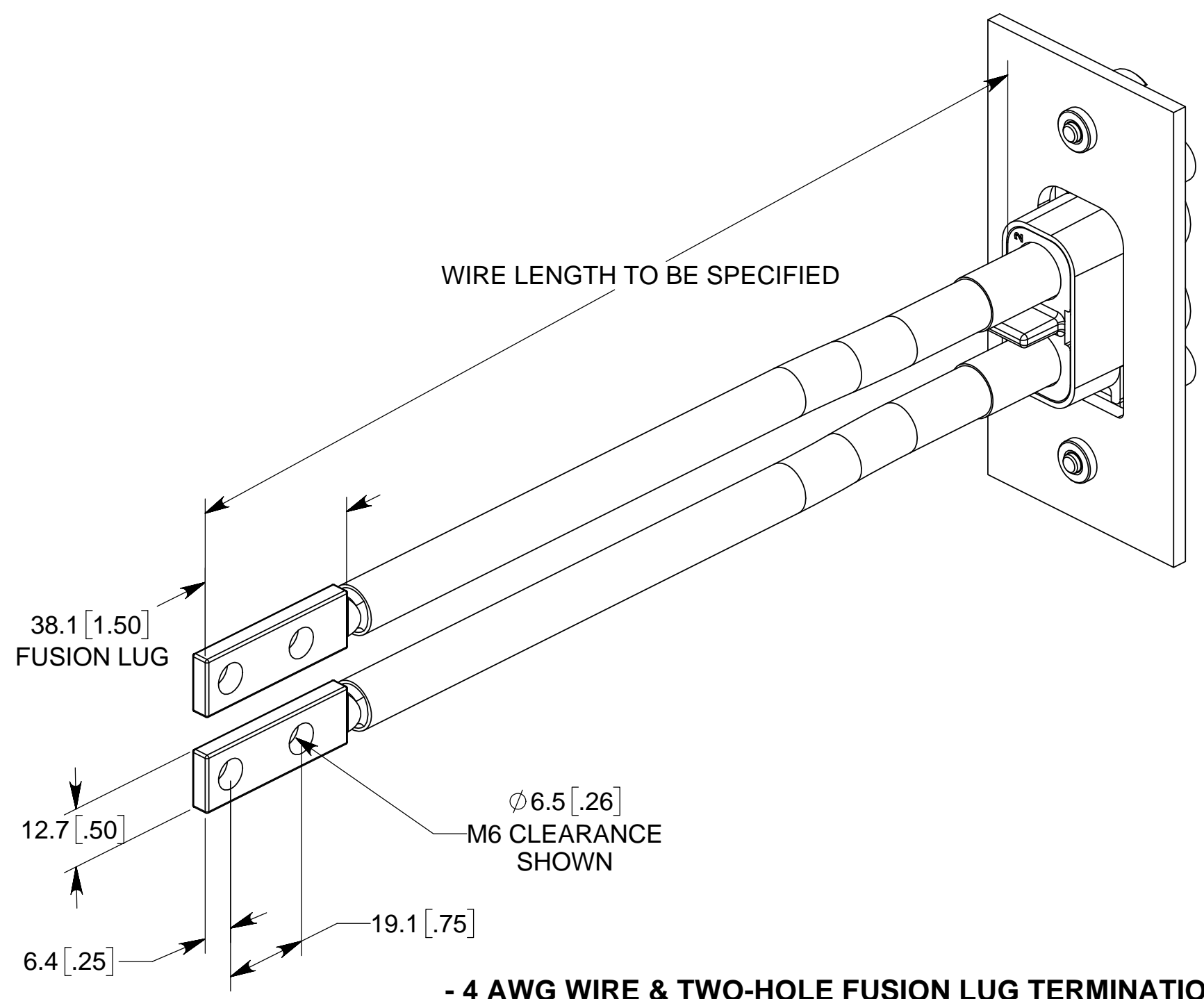
2 MM OFFSET MATED CONDITION

NOTE : DUAL POLE TERMINATION SHOWN IN THIS SHEET

DO NOT SCALE		NAME	DATE	 <small>Power Distribution Bus Bars Thermal Management Solutions Flexible Power Cables Power Connectors PowerRail</small>
TOLERANCES		DRAWN	Vathsa 4-Aug-2017	
UNLESS OTHERWISE SPECIFIED: <small>DIMENSIONS ARE IN MILLIMETERS(INCHES)</small>		CHECKED	H. Han 4-Aug-2017	
<small>DECIMALS ±0.2 X.XX ±0.08 X.XXX ±0.013</small>		<small>ANGLES ±2.0</small>		<small>APPROVED</small> J. August 4-Aug-2017
SIZE C	CAGE CODE 95354	<small>PROPRIETARY AND CONFIDENTIAL</small> <small>THIS DOCUMENT CONTAINS CONFIDENTIAL AND PROPRIETARY INFORMATION THAT CANNOT BE REPRODUCED OR DIVULGED, IN WHOLE OR IN PART, WITHOUT WRITTEN AUTHORIZATION FROM METHODE ELECTRONICS, INC.</small>		TITLE: USER DRAWING, M-DUAL SIZE 6.4 MM CONTACTS 4 & 8 AWG WIRE CRIMP & M5 THREADS DRAWING NUMBER C6313-07656-00100 REV SK7 METHODE P/N N/A REV - FILENAME: 6313-07656-00100 SHEET 5 OF 6

CUSTOMER	ASSEMBLY P/N	REV
METHODE ASSY P/N		

THIS DRAWING DOES NOT REPLACE THE CUSTOMER DRAWING
 USE THIS DRAWING AS A REFERENCE
 ALL DIMENSIONS NOT SPECIFIED ON THIS DWG ARE DRIVEN BY THE DXF FILE
 CREATED FROM THE 3D MODEL BY THE METHODE POWER SOLUTIONS GROUP.
 UNLESS OTHERWISE SPECIFIED, THE DEFAULT TOLERANCE IS: ±.005 IN.



- 4 AWG WIRE & TWO-HOLE FUSION LUG TERMINATION -

NOTE:
 DIMENSIONS REFLECT STANDARD
 TWO-HOLE STRAIGHT FUSION-LUGS

DO NOT SCALE		NAME	DATE	 <small>Power Distribution Bus Bars Thermal Management Solutions Flexible Power Cables Power Connectors PowerRail</small>
TOLERANCES		DRAWN	Vathsa 4-Aug-2017	
UNLESS OTHERWISE SPECIFIED: DIMENSIONS ARE IN MILLIMETERS(INCHES)		CHECKED	H. Han 4-Aug-2017	
DECIMALS	ANGLES	APPROVED	J. August 4-Aug-2017	 PROPRIETARY AND CONFIDENTIAL THIS DOCUMENT CONTAINS CONFIDENTIAL AND PROPRIETARY INFORMATION THAT CANNOT BE REPRODUCED OR DIVULGED, IN WHOLE OR IN PART, WITHOUT WRITTEN AUTHORIZATION FROM METHODE ELECTRONICS, INC.
X.X ± 0.2	± 2.0			
X.XX ± 0.08				TITLE: USER DRAWING, M-DUAL SIZE 6.4 MM CONTACTS 4 & 8 AWG WIRE CRIMP & M5 THREADS DRAWING NUMBER C6313-07656-00100
X.XXX ± 0.013				REV SK7
SIZE C	CAGE CODE 95354			METHODE P/N N/A REV -
				FILENAME: 6313-07656-00100 SHEET 6 OF 6