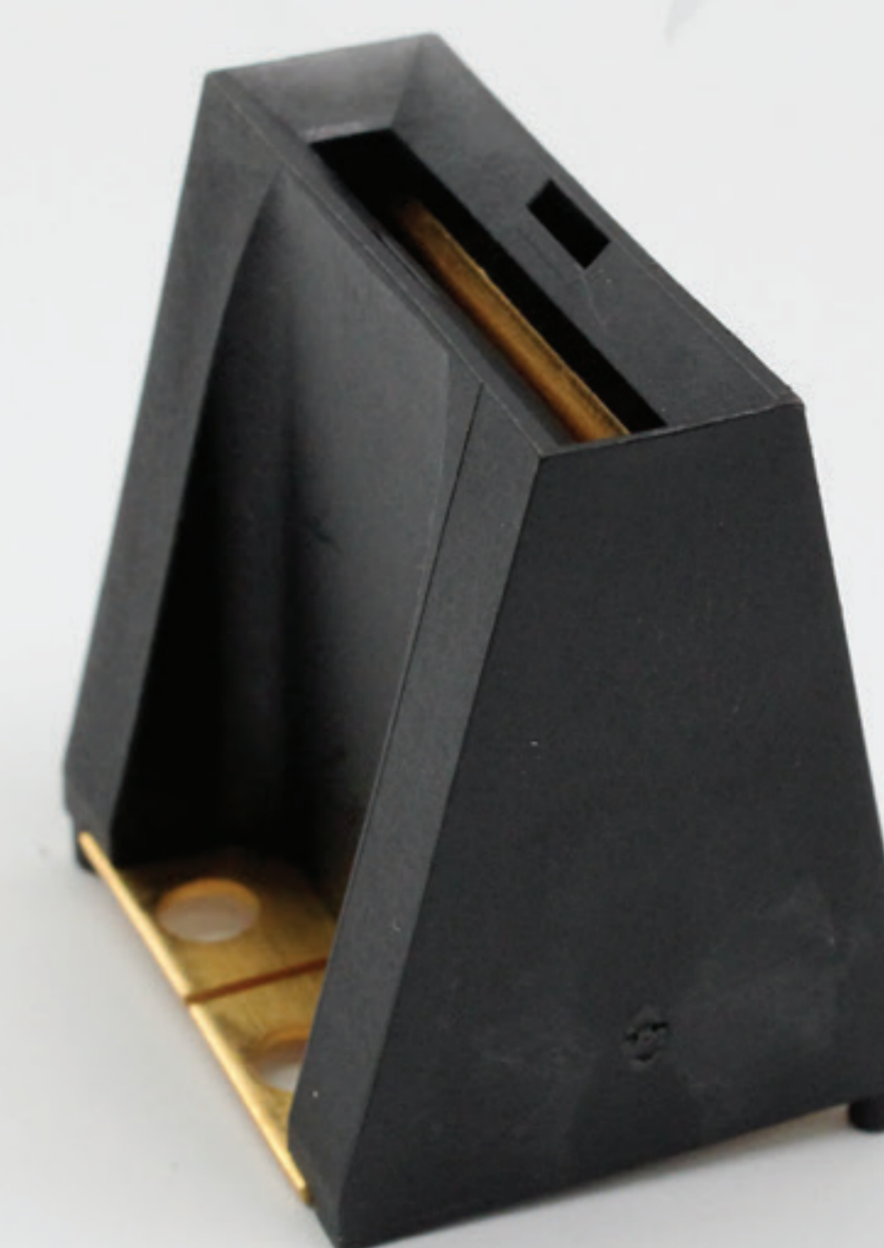


MCC Bus Bar Clip Connector



The MCC Bus Bar Clip Connector is a bus bar to bus bar connector having isolated opposing interconnects for two pole connections or combined single pole 400 Amp capacity. The connector base is open allowing bus bar feed through. Lead-in provides load-pluggable and current interruption capability using typical nickel, silver or gold surface.

- High Current Capacity - Up To 400A
- Hot / Load Pluggable
- Low Voltage Drop
- UL 1977 Standard Compliant
- CSA Standard C22.2 No. 182.3-M1987 Compliant
- RoHS Compliant



**- MCC CONNECTOR -
BUS-BAR MOUNTED**

SPECIFICATIONS (BUS BAR TO BUS BAR)

Materials & Finish

Insulator	Polyester (PBT), UL 94 V-0
Contact	Copper Beryllium Alloy (Selectively Gold Plated - Min. 30 μ m, over Nickel)
Contact Holder / Conductor Mounting	Copper Alloy (Gold Plated, over Nickel)

Mechanical

Insertion Force	88N (20 lbf) Typical
Extraction Force	66N (15 lbf) Typical

Electrical

Maximum Operating Current	400 A
Operating Current at 30 ° T-Rise	240 A
Insulator Voltage	600 VAC / 600 VDC
Load Pluggable Current	200 A at 12 V Open Circuit 100 A at 60 V Open Circuit

Environmental

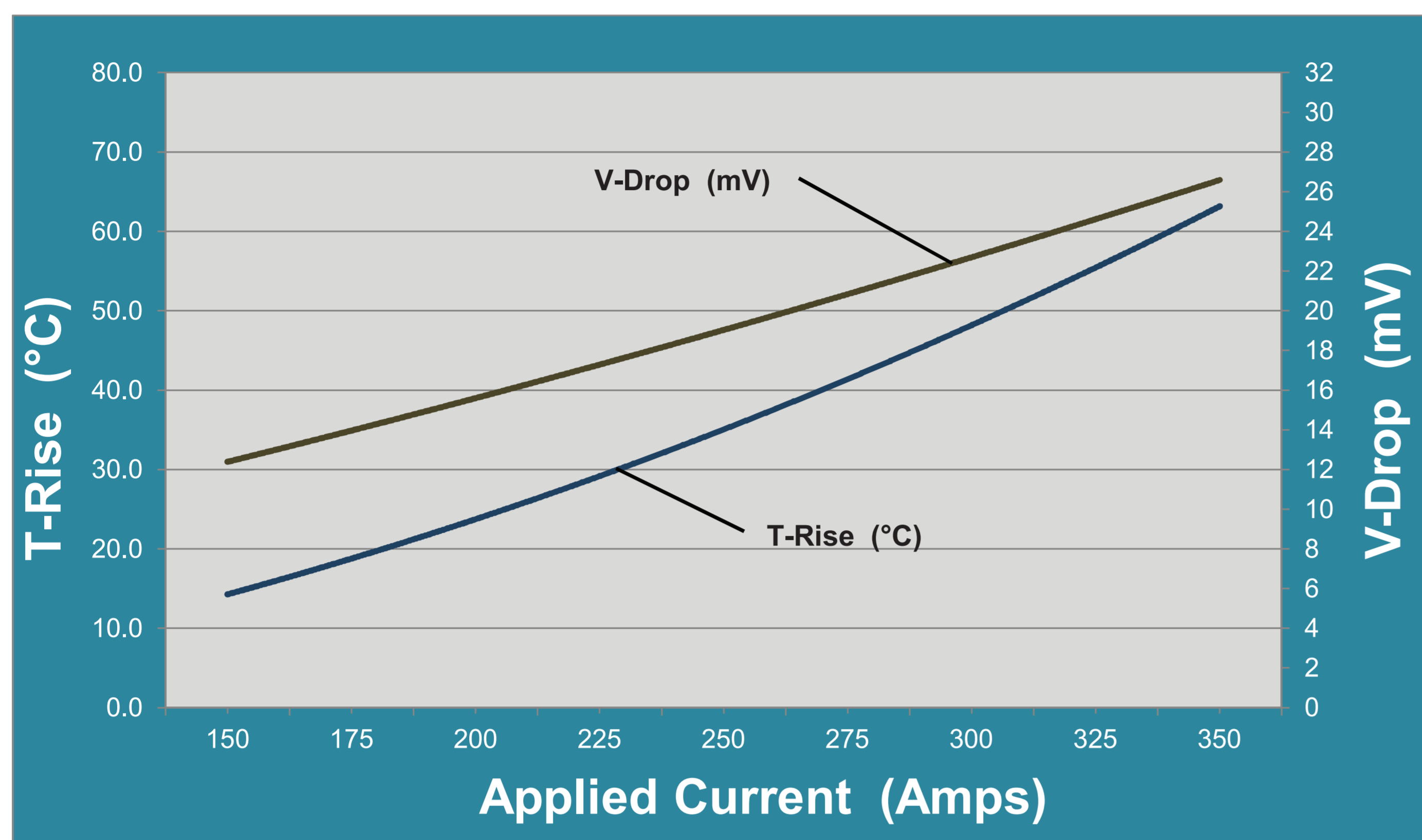
Maximum Operating Temperature	130°C
Storage Temperature	-40°C to 130°C

REGULATORY SPECIFICATIONS

SAFETY: UL 1977, CSA Standard C22.2 No. 182.3-M1987 (UL File Number E303434)

RoHS: IEC Directive 2002/95/EC

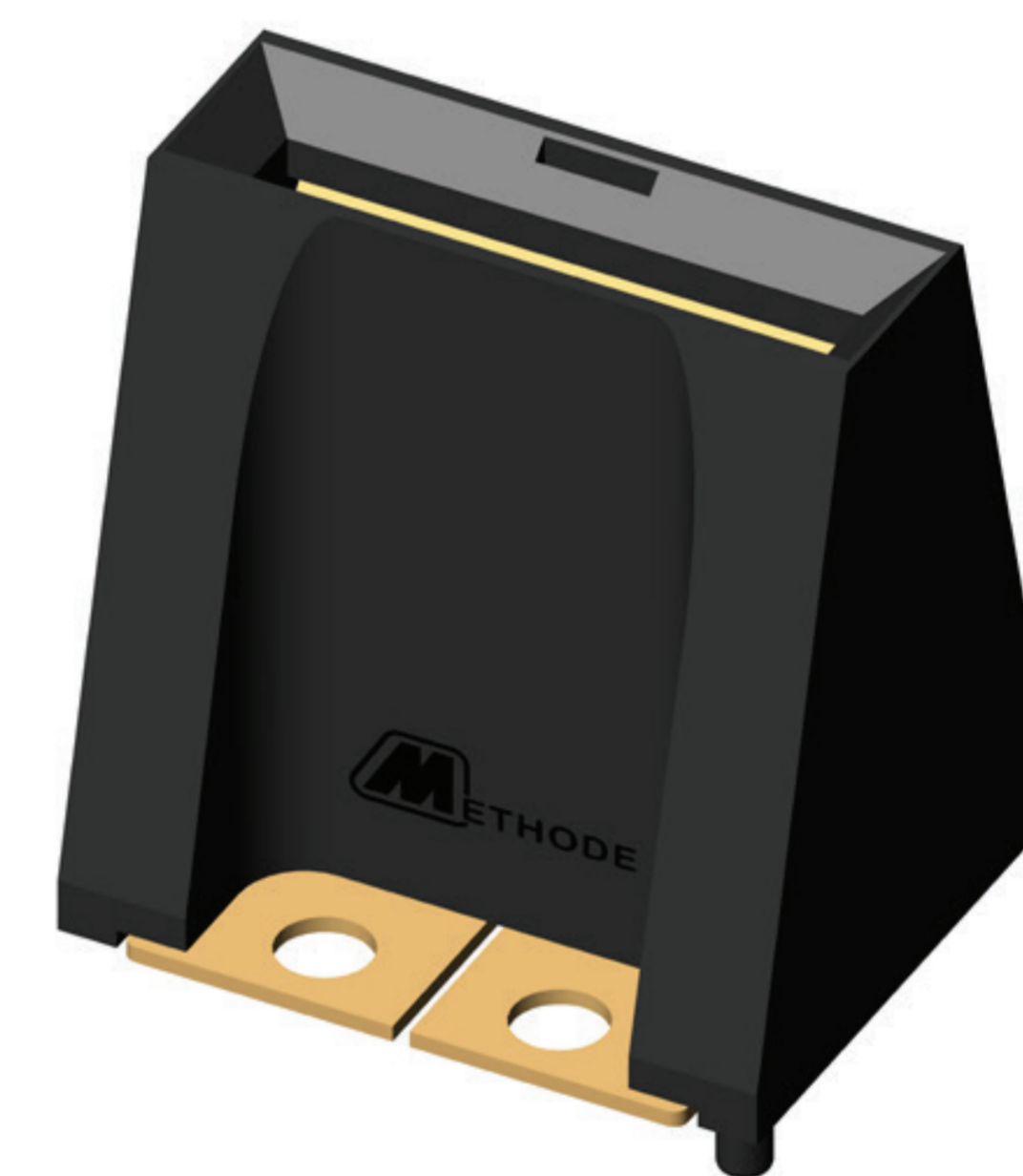
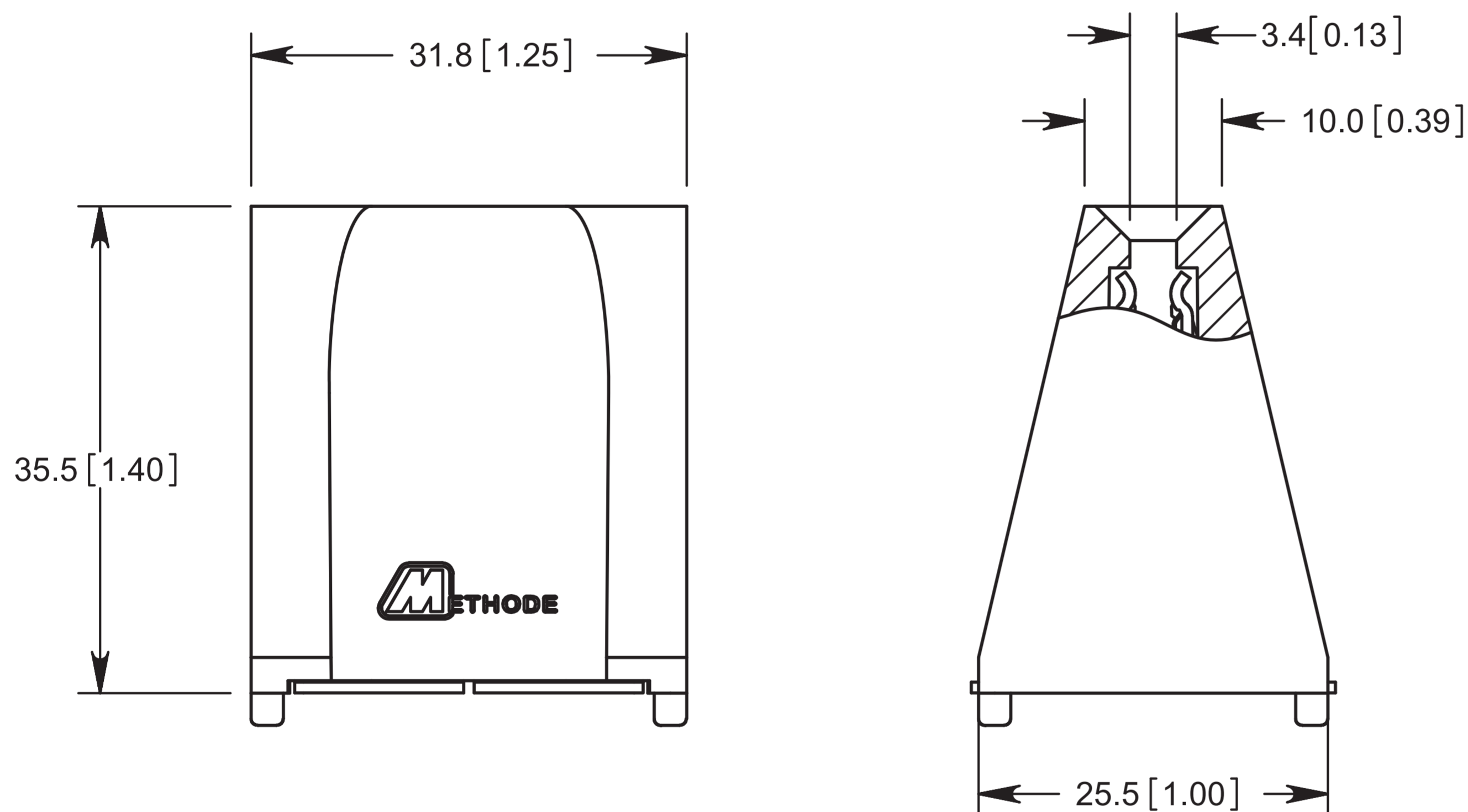
ELECTRICAL PERFORMANCE



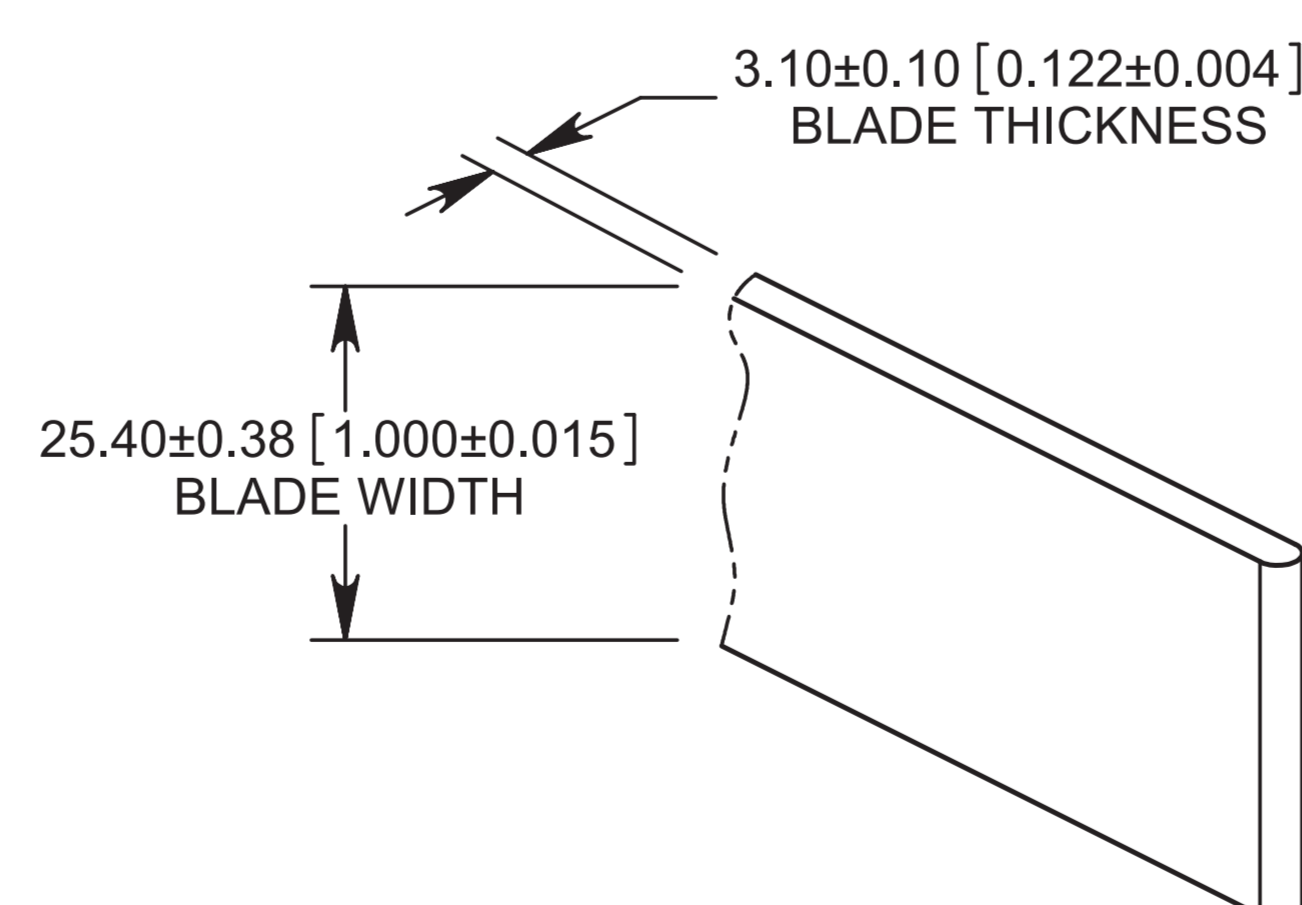
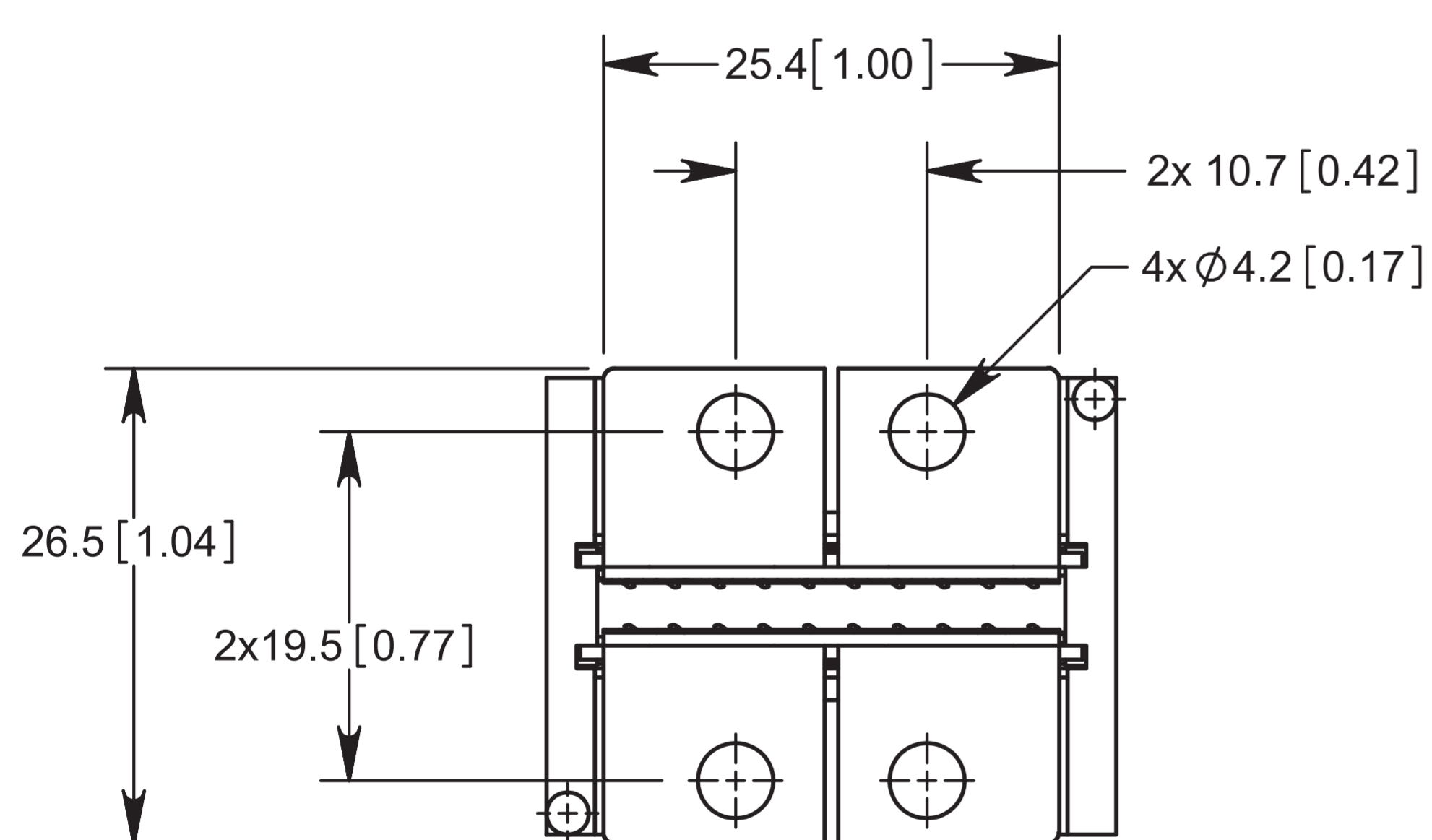
Test Conditions:

Normalized graph shows MCC Connector electrical performance for temperature rise and voltage drop from 150 amps to 350 amps. Connector is mounted on copper conductor 44 x 6.3 mm. Copper bus interconnect 25 x 3.2 mm.

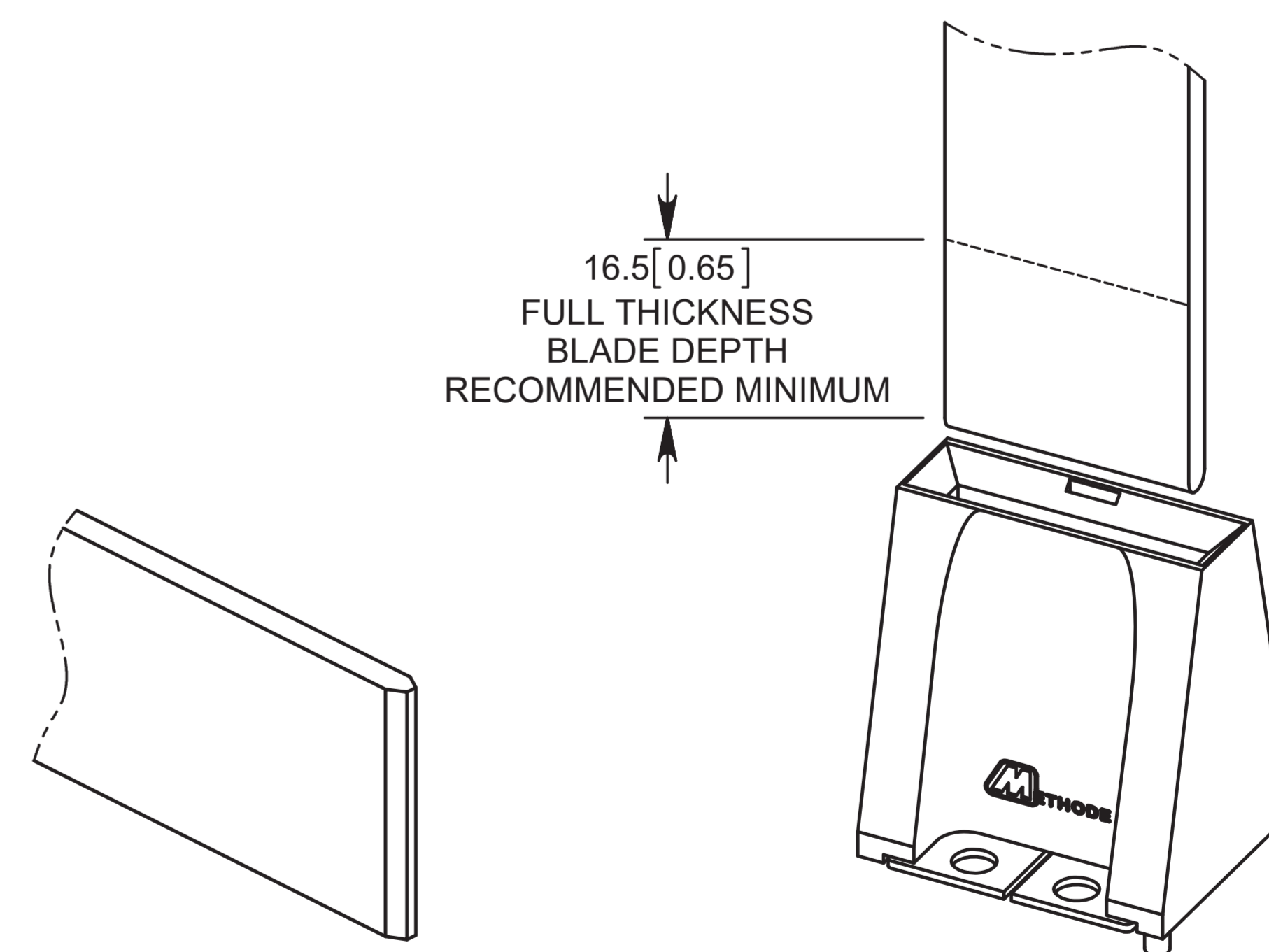
MCC CONNECTOR DRAWING



- MCC CONNECTOR -
PN: 5301-07134-00105



RADIUS EDGE



CHAMFER EDGE

MATING DEPTH

ORDERING INFORMATION

Part Number: 5301-07134-00105

sales@methode.com
(847) 577-9545