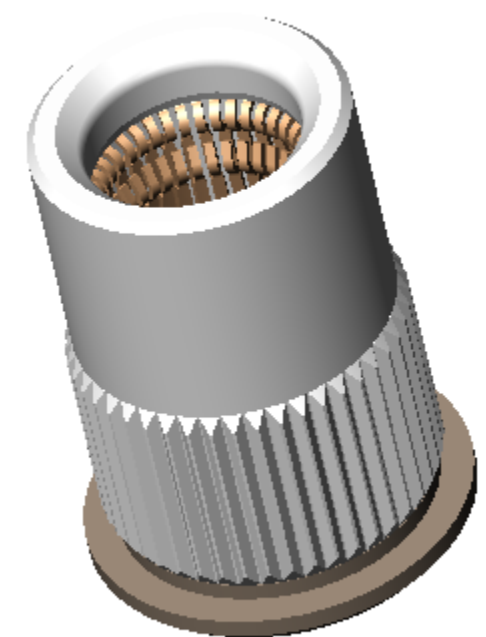
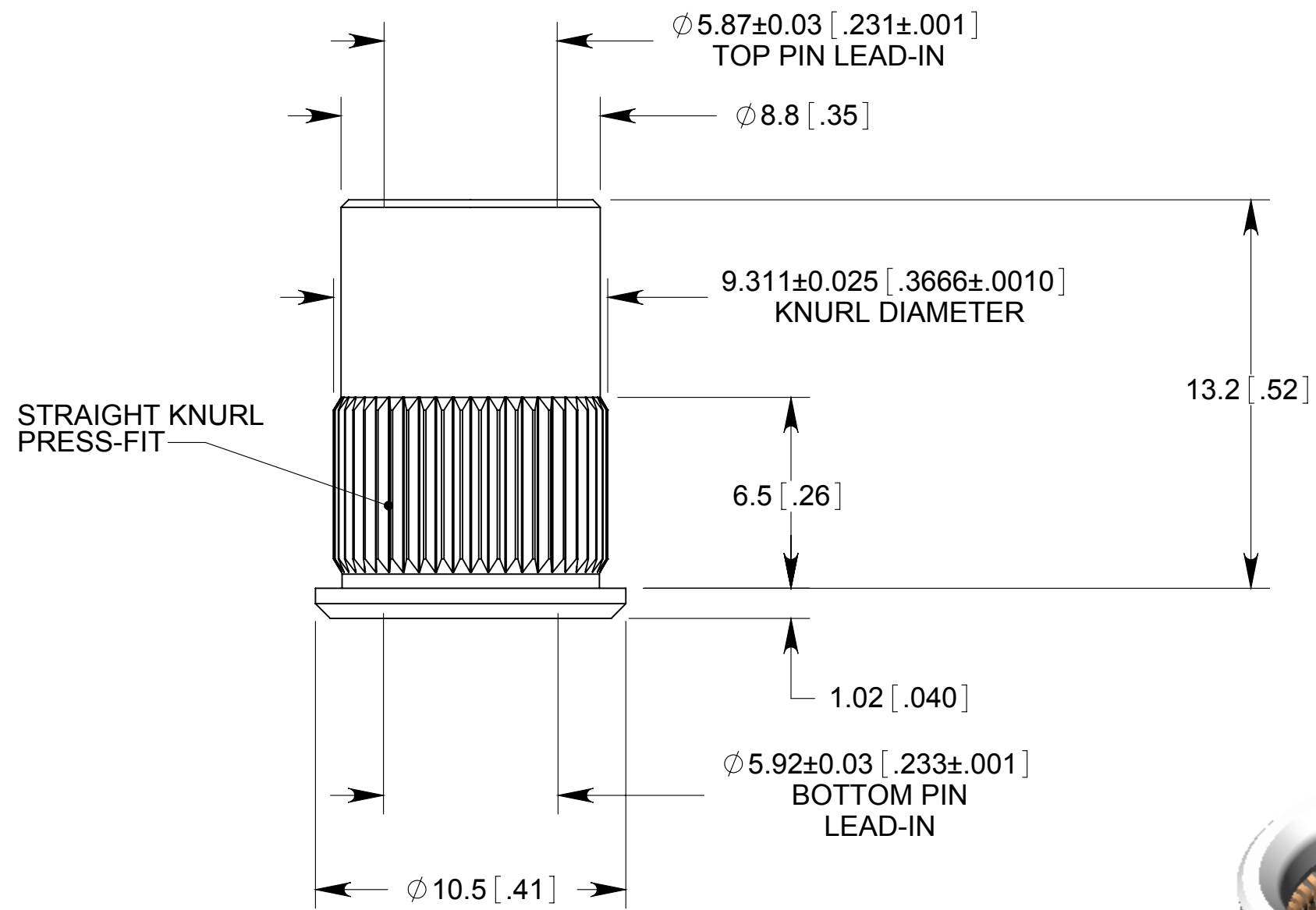
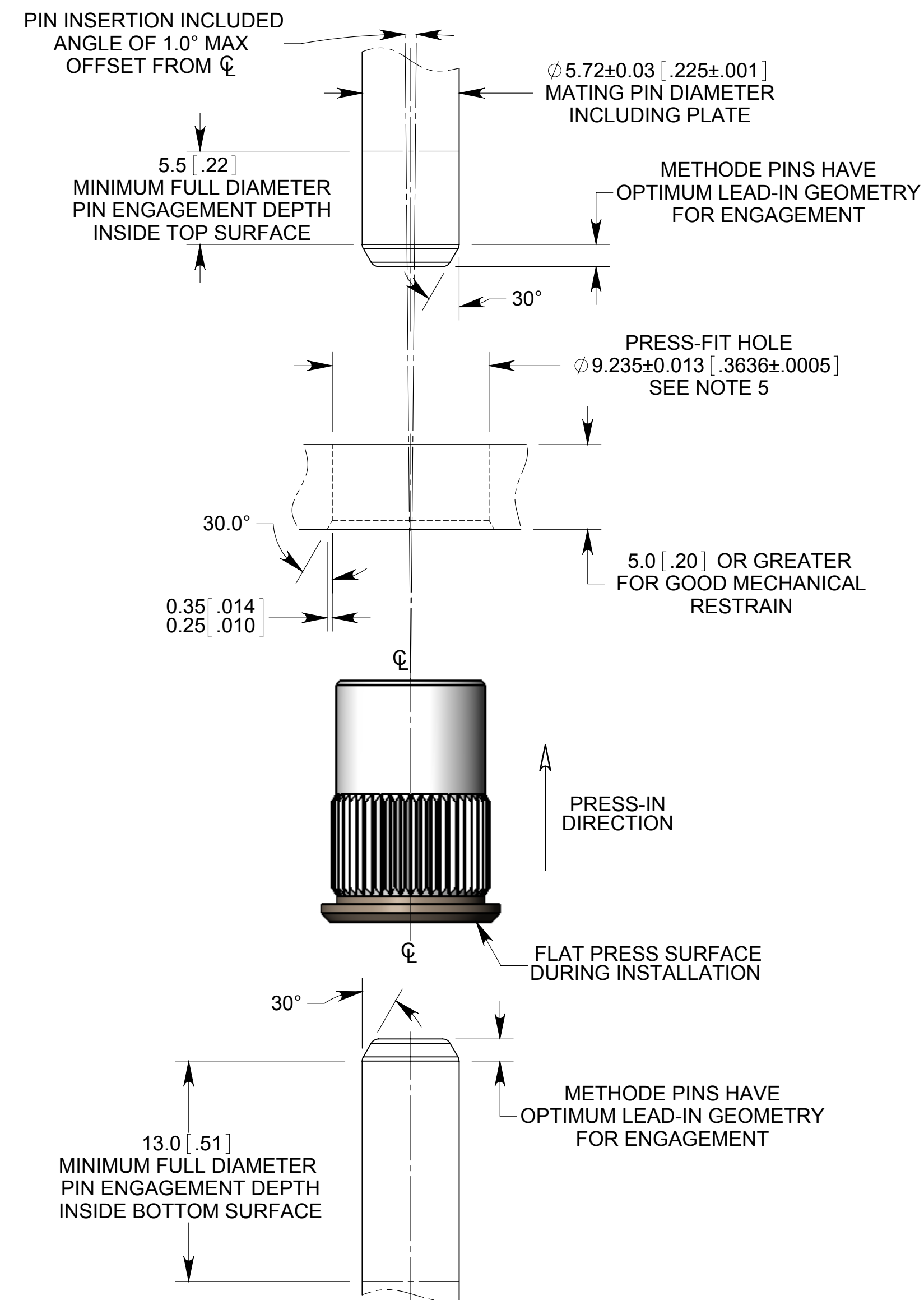


ECO	REV	VER	DESCRIPTION	DATE
10154	E		KNURL DIMN & ANGULARITY ADDED; TOLERANCE ADJUSTED	27-Feb-2017
10186		1	KNURL & PRESS-FIT HOLE DIMENSION UPDATED	21-Apr-2014



**EBC 5.7 MM PB SOCKET
PN: 1101-06630-01104**



NOTES: UNLESS OTHERWISE SPECIFIED

- CONTACT NAME AND PART NUMBER:
NAME: EMBEDDED BUS-BAR CONNECTOR (EBC), PB SIZE 5.7 MM
PART NUMBER: 1101-06630-01104
- MATERIALS:
SOCKET CONTACTS: COPPER ALLOY
SOCKET BODY: COPPER ALLOY
FLANGE / FERRULE: COPPER ALLOY
- FINISHES:
SOCKET CONTACTS: SILVER PLATING OVER NICKEL UNDER PLATING
SOCKET BODY: SILVER PLATING OVER NICKEL UNDER PLATING
FLANGE / FERRULE: NICKEL PLATING
- REFERENCE DIMENSIONS IN PARENTHESIS (X.XX) ARE WITHOUT TOLERANCE AND USED FOR INFORMATION ONLY.
- PRESS-FIT HOLE DIMENSION SHOWN PROVIDES A 0.08[.003] NOMINAL DIAMETER INTERFERENCE FOR USE IN SOLID COPPER INSTALLATIONS ONLY. THESE VALUES ARE GUIDELINES; ACTUAL CONDUCTOR THICKNESS, HOLE DIAMETER AND LEAD-IN SHOULD BE CHARACTERIZED BY THE USER FOR THEIR PARTICULAR APPLICATION.

THIRD ANGLE PROJECTION		NAME	DATE	METHODE ELECTRONICS, INC. POWER SOLUTIONS GROUP 1750 Junction Avenue, San Jose, CA 95112 (408) 453-9500								
TOLERANCES UNLESS OTHERWISE SPECIFIED DIMENSIONS ARE IN MILLIMETERS TOLERANCES ARE: <table border="0"> <tr> <td>DECIMALS</td> <td>ANGLES</td> </tr> <tr> <td>X.X ± 0.2</td> <td>± 2.0</td> </tr> <tr> <td>X.XX ± 0.08</td> <td></td> </tr> <tr> <td>X.XXX ± 0.013</td> <td></td> </tr> </table>		DECIMALS	ANGLES		X.X ± 0.2	± 2.0	X.XX ± 0.08		X.XXX ± 0.013		<i>ORIG:</i> R. Larsen	03/17/2009
		DECIMALS	ANGLES									
		X.X ± 0.2	± 2.0									
X.XX ± 0.08												
X.XXX ± 0.013												
<i>ENGR:</i> R. Larsen	03/17/2009	TITLE: USER DRAWING, EMBEDDED CONTACT PB SIZE 5.7 MM STRAIGHT KNURL PRESS-FIT										
SURFACE FINISH: N/A		<i>CHECKED:</i> H. Han	03/17/2009	<table border="1"> <tr> <td>SIZE</td> <td>DRAWING NUMBER:</td> <td>REV</td> </tr> <tr> <td>C</td> <td>C1101-06630-01104</td> <td>E</td> </tr> </table>	SIZE	DRAWING NUMBER:	REV	C	C1101-06630-01104	E		
		SIZE	DRAWING NUMBER:	REV								
C	C1101-06630-01104	E										
PROPRIETARY AND CONFIDENTIAL NOTICE ALL INFORMATION IN THIS DRAWING IS CONFIDENTIAL AND PROPRIETARY INFORMATION AND IS NOT TO BE DISTRIBUTED, COPIED, OR SHARED EXCEPT WITH PRIOR WRITTEN APPROVAL OF METHODE ELECTRONICS, INC. POWER SOLUTIONS GROUP.		SCALE: 5:1 FILENAME: 1101-06630-01104		SHEET 1 OF 1								