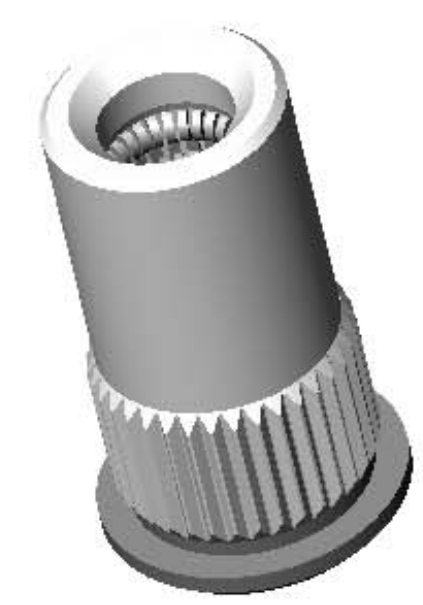
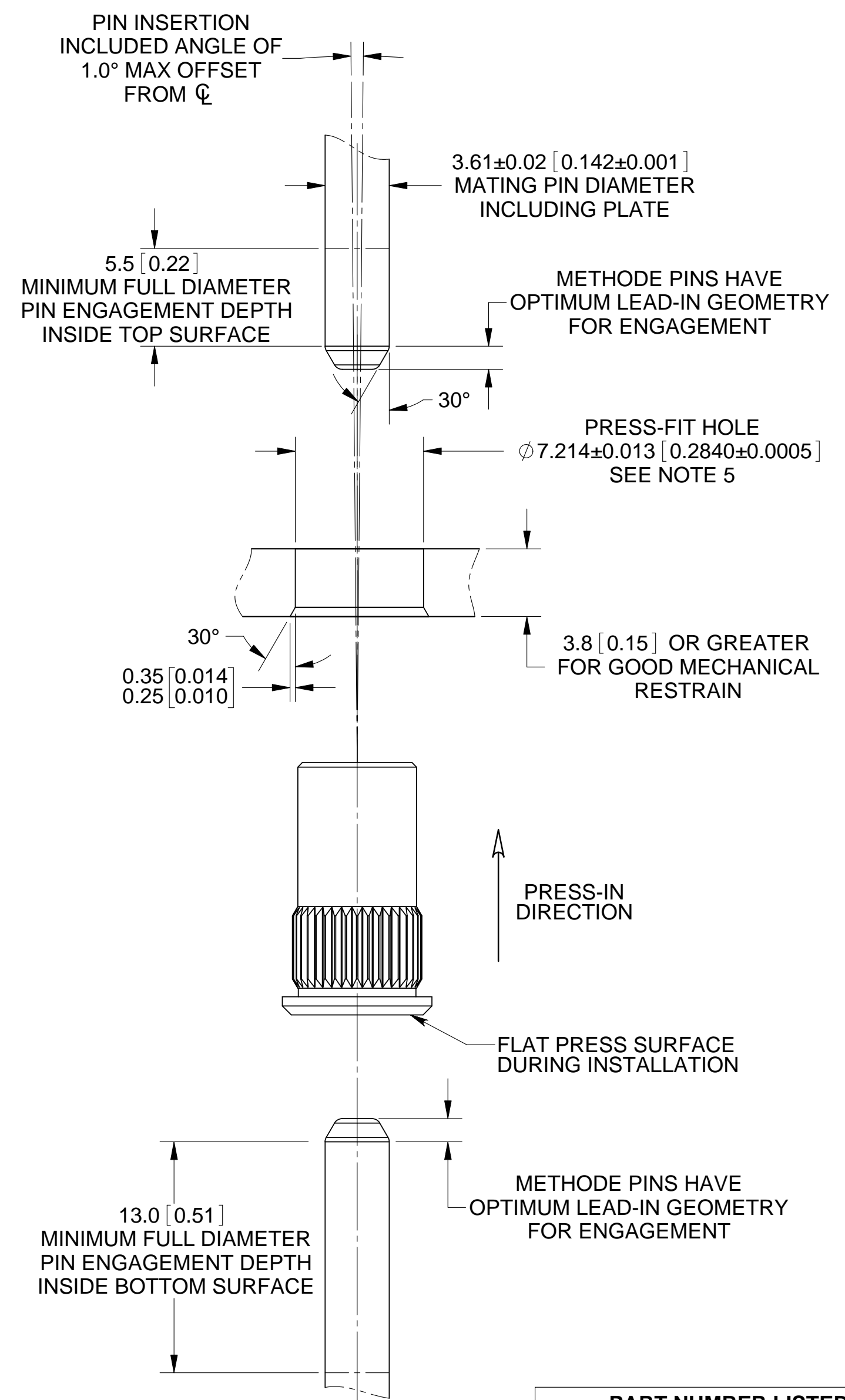
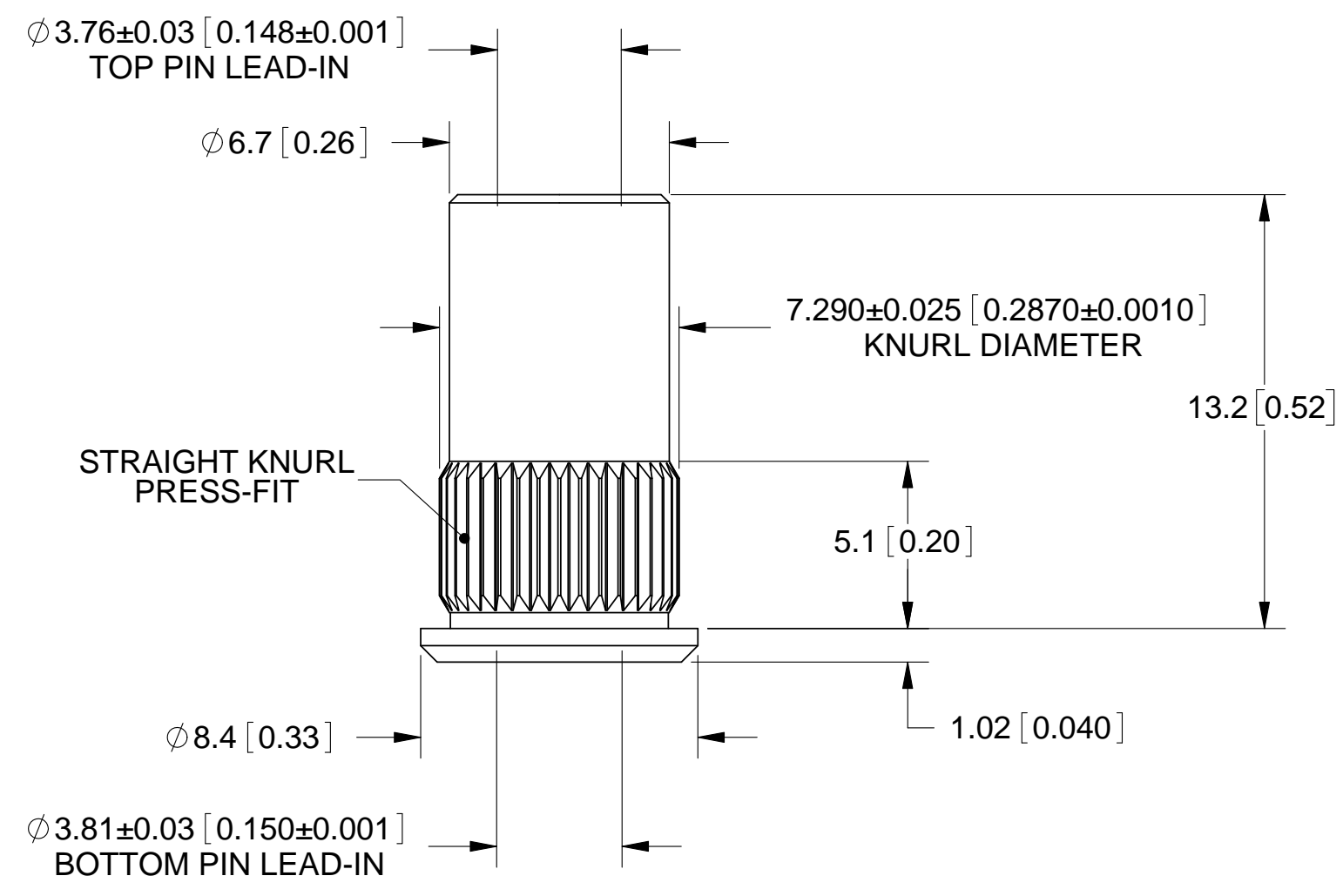


REV	VER	ECO	DESCRIPTION	DATE
B	-	EC-251	CHG FINISHED KNURL DIA & PRESS-FIT HOLE DIA - CHG CAD APPL	12/09/2009
C	-	10134	CHANGE KNURL DIMENSIONING	2/7/2014
	1	10777	ANGULARITY ADDED. TITLE BLOCK UPDATED.	20-DEC-2018



**EBC 3.6 MM PB SOCKET  
PN: 1101-06634-01104**

**NOTES:** UNLESS OTHERWISE SPECIFIED

- CONTACT NAME AND PART NUMBER:  
NAME: EMBEDDED BUSBAR CONNECTOR (EBC), POWERBUD® SIZE 3.6 MM  
PART NUMBER: 1101-06634-01104
- MATERIALS:  
SOCKET CONTACTS: COPPER ALLOY  
SOCKET BODY: COPPER ALLOY  
FLANGE / FERRULE: COPPER ALLOY
- FINISHES:  
SOCKET CONTACTS: SILVER PLATING OVER NICKEL UNDER PLATING  
SOCKET BODY: SILVER PLATING OVER NICKEL UNDER PLATING  
FLANGE / FERRULE: NICKEL PLATING
- REFERENCE DIMENSIONS IN PARENTHESIS (X.XX) ARE WITHOUT TOLERANCE AND USED FOR INFORMATION ONLY.
- PRESS-FIT HOLE DIMENSION SHOWN PROVIDES A 0.08[.003] NOMINAL DIAMETER INTERFERENCE FOR USE IN SOLID COPPER INSTALLATIONS ONLY. THESE VALUES ARE GUIDELINES; ACTUAL CONDUCTOR THICKNESS, HOLE DIAMETER AND LEAD-IN SHOULD BE CHARACTERIZED BY THE USER FOR THEIR PARTICULAR APPLICATION.

THIRD ANGLE PROJECTION		NAME	DATE
<b>TOLERANCES</b> UNLESS OTHERWISE SPECIFIED DIMENSIONS ARE IN MILLIMETERS TOLERANCES ARE:  <b>DECIMALS</b> <b>ANGLES</b> X.X      ± 0.2      ± 2.0 X.XX      ± 0.08 X.XXX      ± 0.013  <b>SURFACE FINISH:</b> N/A		<b>ORIG:</b> H. Han	2/7/2014
		<b>ENGR:</b> H. Han	2/7/2014
		<b>CHECKED:</b> R. Larsen	2/7/2014
<b>PROPRIETARY AND CONFIDENTIAL NOTICE</b> ALL INFORMATION IN THIS DRAWING IS CONFIDENTIAL AND PROPRIETARY INFORMATION AND IS NOT TO BE DISTRIBUTED, COPIED, OR SHARED EXCEPT WITH PRIOR WRITTEN APPROVAL OF METHODE ELECTRONICS, INC. POWER SOLUTIONS GROUP.			

PART NUMBER LISTED IN NOTE 1.		
<b>METHODE ELECTRONICS, INC.</b> <b>POWER SOLUTIONS GROUP</b> 2025 Gateway Pl. #235, San Jose, CA 95110 (408) 453-9500		
<b>TITLE: USER DRAWING, EMBEDDED CONNECTOR PB SIZE 3.6 MM PIN STRAIGHT KNURL</b>		
<b>SIZE</b> C	<b>DRAWING NUMBER:</b> C1101-06634-01104	<b>REV</b> C
<b>SCALE:</b> 5:1	<b>FILENAME:</b> 1101-06634-01104	<b>SHEET</b> 1 OF 1