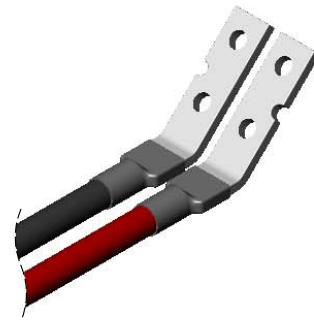
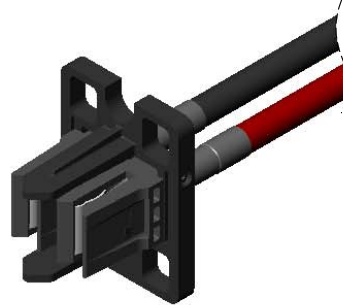


REV	VER	ECO	DESCRIPTION	DATE
A	--	N/A	INITIAL RELEASE DRAWING	03/14/2013
	2	10219	ADD NO-CHOKE OPTION & PN	06/18/2014

– CONNECTOR MODULE –

(2) MINI-MCC CONNECTORS / FLOAT MOUNTING PLATE /  
(2) FUSION LUG CABLES

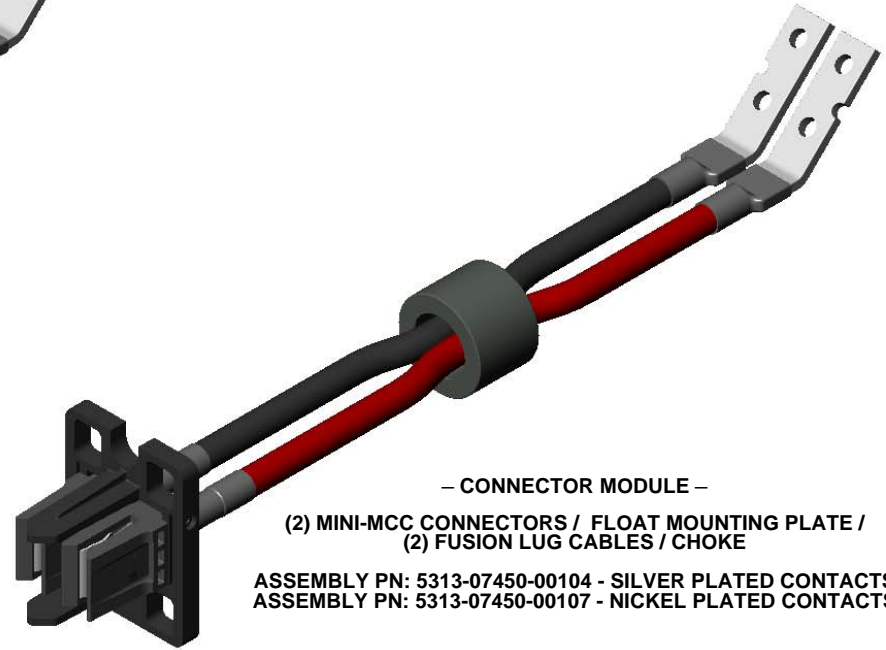
ASSEMBLY PN: 5313-07593-00104 - SILVER PLATED CONTACTS  
ASSEMBLY PN: 5313-07593-00107 - NICKEL PLATED CONTACTS



– CONNECTOR MODULE –

(2) MINI-MCC CONNECTORS / FLOAT MOUNTING PLATE /  
(2) FUSION LUG CABLES / CHOKE

ASSEMBLY PN: 5313-07450-00104 - SILVER PLATED CONTACTS  
ASSEMBLY PN: 5313-07450-00107 - NICKEL PLATED CONTACTS



NOTES: UNLESS OTHERWISE SPECIFIED

1. CONNECTOR NAMES AND PART NUMBERS:

- **CONNECTOR PART NUMBER: 5301-07278-00104 - SILVER PLATED CONTACT**  
**CONNECTOR PART NUMBER: 5301-07278-00107 - NICKEL PLATED CONTACT**  
CONNECTOR DESCRIPTION:  
MINI-MCC BUS CONNECTOR  
SIZE 3.0 MM THICK MATING BUS, 6 AWG CRIMP BARREL
- **CONNECTOR MODULE PART NUMBER: 5313-07450-00104 - SILVER PLATED CONTACTS**  
**CONNECTOR MODULE PART NUMBER: 5313-07450-00107 - NICKEL PLATED CONTACTS**  
MODULE INCLUDES:  
(2) MINI-MCC BUS CONNECTORS  
(2) POWERFLEX CABLES 6 AWG 600V / 45° FUSION LUG  
(1) FLOAT MOUNTING PLATE  
(1) CHOKE - KING CORE PN: K5B T 31x22.22x19  
OR STEWARD PN: 28B1250-000  
OR TAI-TECH PN: W5 T 31x22.20x19
- **CONNECTOR MODULE PART NUMBER: 5313-07593-00104 - SILVER PLATED CONTACTS**  
**CONNECTOR MODULE PART NUMBER: 5313-07593-00107 - NICKEL PLATED CONTACTS**  
MODULE INCLUDES:  
(2) MINI-MCC BUS CONNECTORS  
(2) POWERFLEX CABLES 6 AWG 600V / 45° FUSION LUG  
(1) FLOAT MOUNTING PLATE

2. CONNECTOR MATERIALS:

CONNECTOR INSULATOR: POLYESTER THERMOPLASTIC, UL 94 V-0  
MOUNTING PLATE: POLYESTER THERMOPLASTIC, UL 94 V-0  
CONTACTS: COPPER ALLOY  
CRIMP BARREL SHROUD: COPPER ALLOY

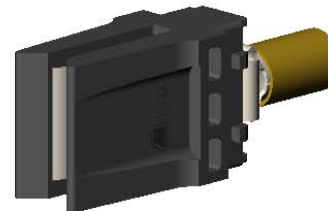
3. FINISHES:

CONTACT INTERFACE: NICKEL PLATE  
FUSION LUG: TIN / SILVER DIP

4. REFERENCE DIMENSIONS IN PARENTHESIS (.XXX) ARE WITHOUT TOLERANCE AND USED FOR INFORMATION ONLY.

5. OPERATIONAL CONDITIONS:

- \* CONNECTOR HOUSING LEAD-IN GATHERING OF 3 MM OFF CENTERLINE PERPENDICULAR TO MATING BUS.
- \* MOUNTING PLATE FLOAT  $\pm 3$  MM PERPENDICULAR TO MATING BUS AND  $\pm 4$  MM PARALLEL TO MATING BUS WHEN USING  $\varnothing 4.2$  MM STANDOFF BARREL AS DESCRIBED ON SHEET 3.
- \* INDIVIDUAL CONNECTOR FLOAT CLEARANCE IN MOUNTING PLATE OF 0.3 MM.
- \* RELIABLE MATE DEPTH (SEE SHEET 3).
- \* ESTIMATED CONNECTOR MATING (SLIDING) FORCES 1.2 KGF [12 N] WHEN BUS HAS A SMOOTH SURFACE FINISH.

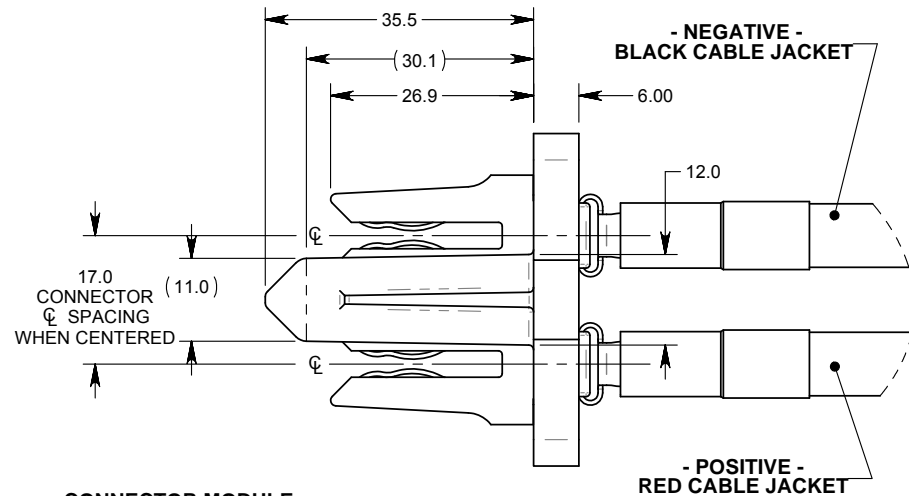
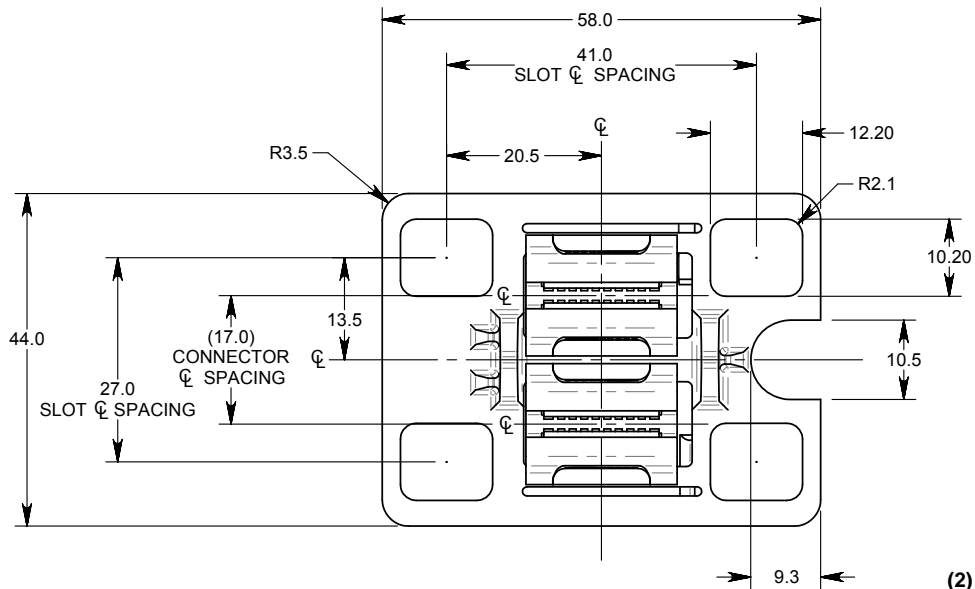


– MINI-MCC BUS CONNECTOR –

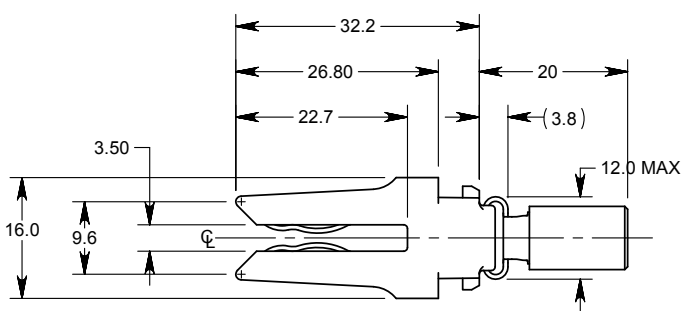
PN: 5301-07278-00104 - SILVER PLATED CONTACT  
PN: 5301-07278-00107 - NICKEL PLATED CONTACT

CONNECTOR & ASSEMBLY MODULE PART NUMBERS:  
LISTED IN NOTE 1  
DRAWING NUMBER BELOW IN TITLE BLOCK

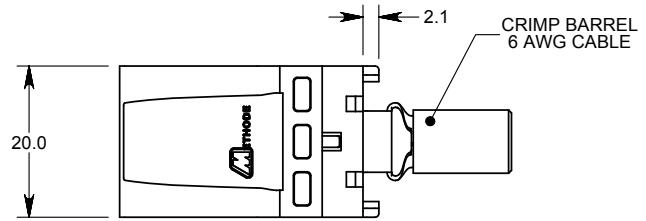
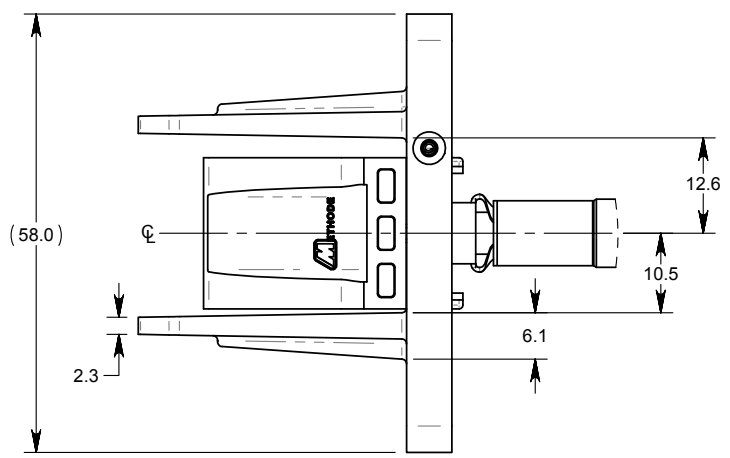
THIRD ANGLE PROJECTION		NAME	DATE	METHODE ELECTRONICS, INC. POWER SOLUTIONS GROUP		
UNLESS OTHERWISE SPECIFIED DIMENSIONS ARE IN MILLIMETERS TOLERANCES ARE:  DECIMALS                      ANGLES X.X                                ± 0.2                                ± 2.0 X.XX                               ± 0.08 X.XXX                              ± 0.013  SURFACE FINISH: N/A		ORIG: R. Larsen	03/14/2013	1750 Junction Avenue, San Jose, CA 95112 (408) 453-9500 <b>TITLE: USER DRAWING, CONNECTOR MODULE DUAL MINI-MCC 3 MM BUS FUSION LUG TERMINATION</b>		
		ENGR: R. Larsen	03/14/2013			
		CHECKED: H. Han	03/14/2013	SIZE: <b>C</b>	DRAWING NUMBER: <b>C5313-07452-001XX</b>	REV: <b>A</b>
PROPRIETARY AND CONFIDENTIAL NOTICE ALL INFORMATION IN THIS DRAWING IS CONFIDENTIAL AND PROPRIETARY INFORMATION AND IS NOT TO BE DISTRIBUTED, COPIED, OR SHARED EXCEPT WITH PRIOR WRITTEN APPROVAL OF METHODE ELECTRONICS, INC. POWER SOLUTIONS GROUP.				SCALE: 2:1	FILENAME: 5313-07452-001XX	SHEET 1 OF 4



**CONNECTOR MODULE  
(2) MINI-MCC CONNECTORS & MOUNTING PLATE**



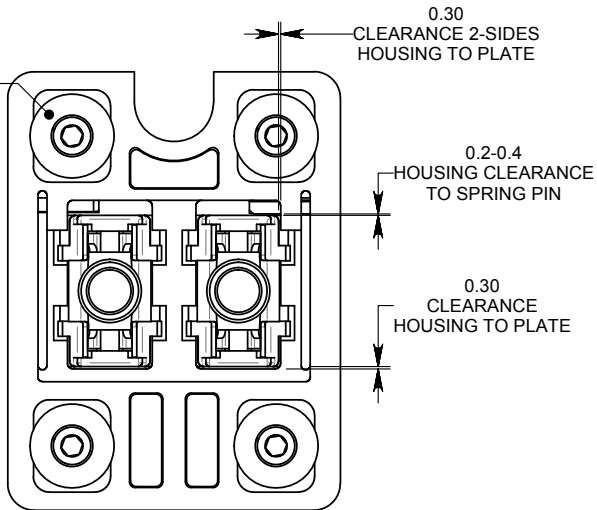
**MINI-MCC BUS CONNECTOR**



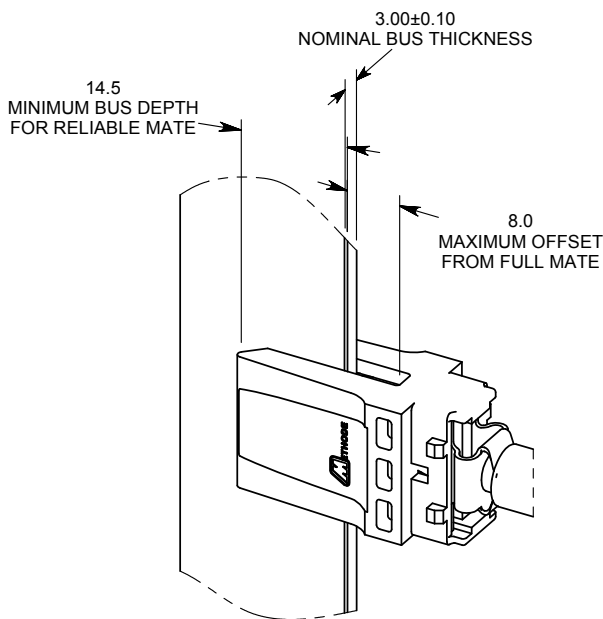
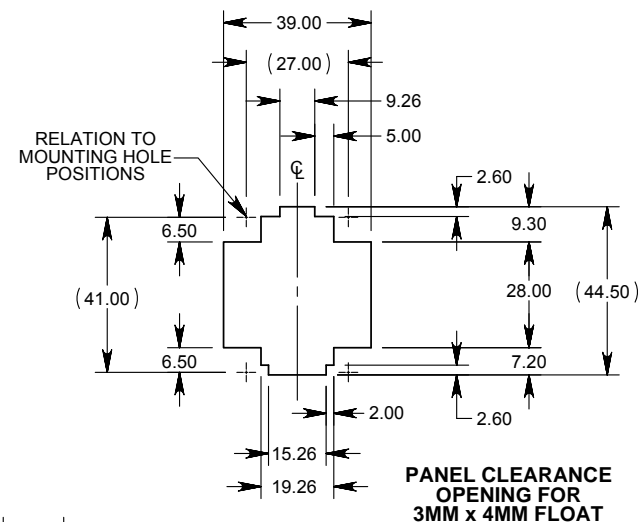
<p><b>THIRD ANGLE PROJECTION</b></p> <p>UNLESS OTHERWISE SPECIFIED DIMENSIONS ARE IN MILLIMETERS TOLERANCES ARE:</p> <p><b>DECIMALS</b>      <b>ANGLES</b></p> <p>X.X      ± 0.2      ± 2.0</p> <p>X.XX   ± 0.08</p> <p>X.XXX ± 0.013</p> <p><b>SURFACE FINISH: N/A</b></p>	<p><b>NAME</b></p> <p><b>ORIG:</b> R. Larsen</p>	<p><b>DATE</b></p> <p>03/14/2013</p>	<p><b>PROPRIETARY AND CONFIDENTIAL NOTICE</b> ALL INFORMATION IN THIS DRAWING IS CONFIDENTIAL AND PROPRIETARY INFORMATION AND IS NOT TO BE DISTRIBUTED, COPIED, OR SHARED EXCEPT WITH PRIOR WRITTEN APPROVAL OF METHODE ELECTRONICS, INC. POWER SOLUTIONS GROUP.</p>
	<p><b>TOLERANCES</b></p>	<p><b>DATE</b></p> <p>03/14/2013</p>	
	<p><b>ENGR:</b> R. Larsen</p>	<p><b>DATE</b></p> <p>03/14/2013</p>	
	<p><b>CHECKED:</b> H. Han</p>	<p><b>DATE</b></p> <p>03/14/2013</p>	

<p><b>METHODE ELECTRONICS, INC.</b> <b>POWER SOLUTIONS GROUP</b> 1750 Junction Avenue, San Jose, CA 95112 (408) 453-9500</p>		
<p><b>TITLE:</b> USER DRAWING, CONNECTOR MODULE DUAL MINI-MCC 3 MM BUS FUSION LUG TERMINATION</p>		
<p><b>SIZE</b></p> <p><b>C</b></p>	<p><b>DRAWING NUMBER:</b></p> <p><b>C5313-07452-001XX</b></p>	<p><b>REV</b></p> <p><b>A</b></p>
<p><b>SCALE:</b> 2:1</p>	<p><b>FILENAME:</b> 5313-07452-001XX</p>	<p><b>SHEET 2 OF 4</b></p>

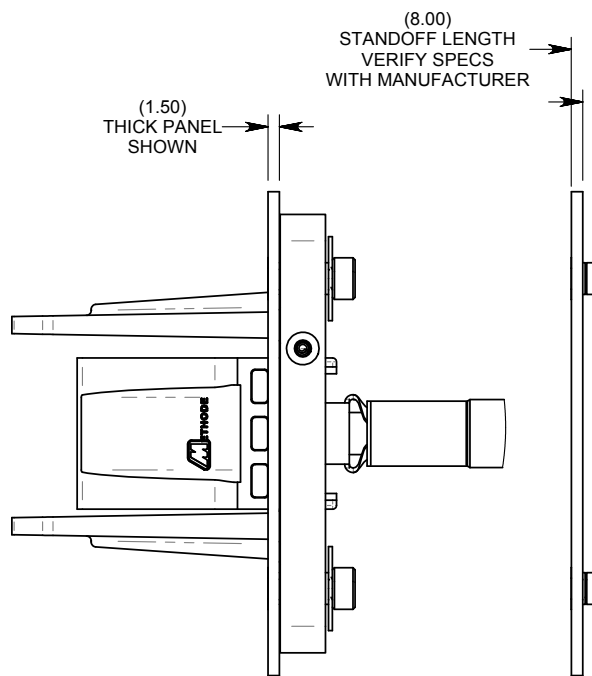
SOCKET CAP SCREWS &  
LARGE WASHERS  
CAPTURE MOUNTING PLATE  
ONTO PANEL STANDOFFS  
OVER 4-CLEARANCE OPENINGS



**CONNECTOR  
FLOAT CLEARANCE  
IN MOUNTING PLATE  
REAR VIEW**



**MATING BUS THICKNESS  
RELIABLE MATING DEPTH**

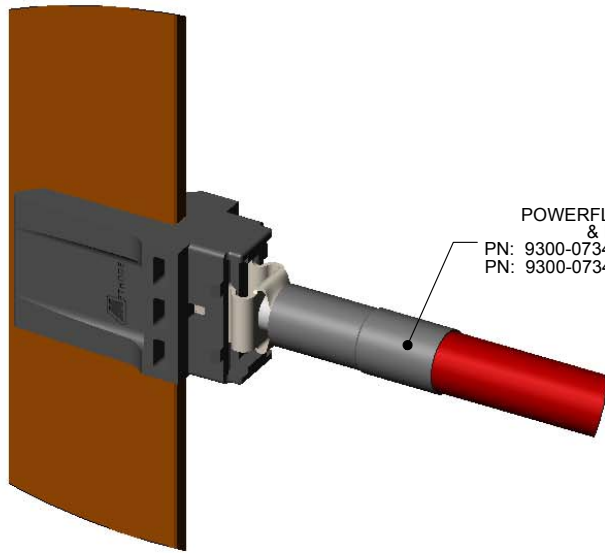


**SYSTEM PANEL & HARDWARE**

<p><b>THIRD ANGLE PROJECTION</b></p>	
<p><b>TOLERANCES</b> UNLESS OTHERWISE SPECIFIED DIMENSIONS ARE IN MILLIMETERS TOLERANCES ARE:</p>	
<p><b>DECIMALS</b></p>	<p><b>ANGLES</b></p>
<p>X.X ± 0.2</p> <p>X.XX ± 0.08</p> <p>X.XXX ± 0.013</p>	<p>± 2.0</p>
<p><b>SURFACE FINISH: N/A</b></p>	

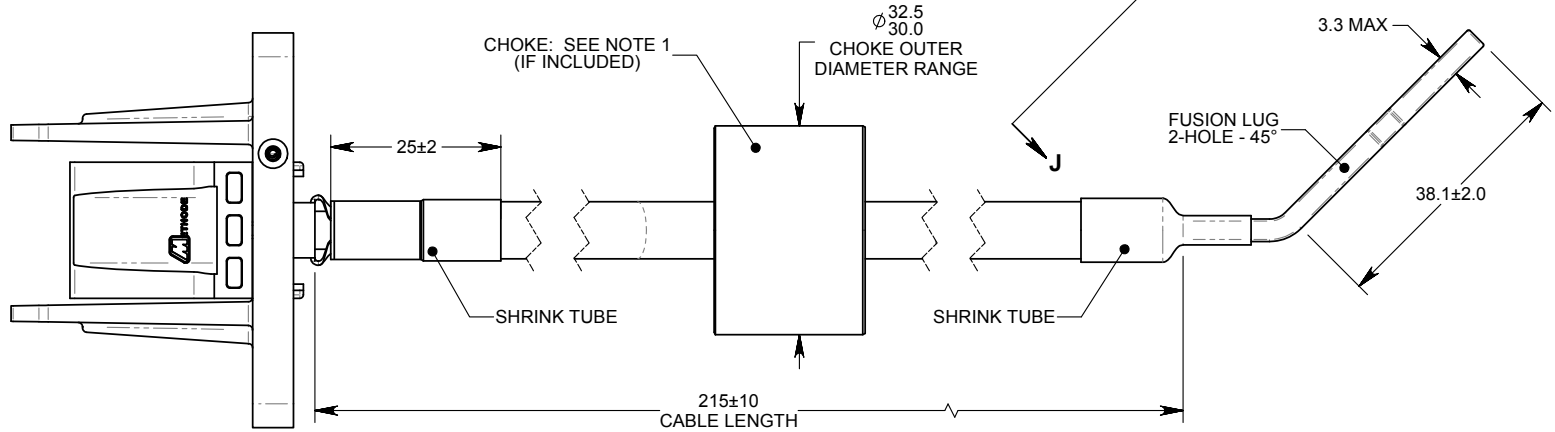
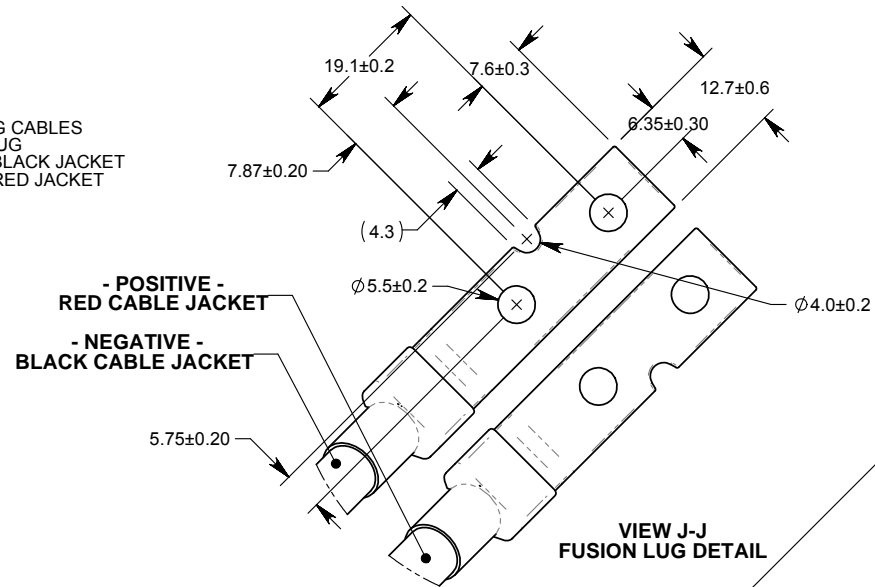
NAME	DATE
<i>ORIG:</i> R. Larsen	03/14/2013
<i>ENGR:</i> R. Larsen	03/14/2013
<i>CHECKED:</i> H. Han	03/14/2013
<p><b>PROPRIETARY AND CONFIDENTIAL NOTICE</b> ALL INFORMATION IN THIS DRAWING IS CONFIDENTIAL AND PROPRIETARY INFORMATION AND IS NOT TO BE DISTRIBUTED, COPIED, OR SHARED EXCEPT WITH PRIOR WRITTEN APPROVAL OF METHODE ELECTRONICS, INC. POWER SOLUTIONS GROUP.</p>	

<p><b>METHODE ELECTRONICS, INC.</b> <b>POWER SOLUTIONS GROUP</b> 1750 Junction Avenue, San Jose, CA 95112 (408) 453-9500</p>		
<p><b>TITLE: USER DRAWING, CONNECTOR MODULE DUAL MINI-MCC 3 MM BUS FUSION LUG TERMINATION</b></p>		
<p><b>SIZE</b> <b>C</b></p>	<p><b>DRAWING NUMBER:</b> <b>C5313-07452-001XX</b></p>	<p><b>REV</b> <b>A</b></p>
<p>SCALE: 2:1</p>	<p>FILENAME: 5313-07452-001XX</p>	<p>SHEET 3 OF 4</p>



POWERFLEX 6 AWG CABLES  
& FUSION LUG  
PN: 9300-07347-01100 BLACK JACKET  
PN: 9300-07348-01100 RED JACKET

WIRE HOOK UP  
SHOWN FULLY MATED



<p><b>THIRD ANGLE PROJECTION</b></p> <p><b>TOLERANCES</b> UNLESS OTHERWISE SPECIFIED DIMENSIONS ARE IN MILLIMETERS TOLERANCES ARE:</p> <p><b>DECIMALS</b>      <b>ANGLES</b> X.X      ± 0.2      ± 2.0 X.XX   ± 0.08 X.XXX ± 0.013</p> <p><b>SURFACE FINISH: N/A</b></p>	<p><b>NAME</b></p> <p>ORIG: R. Larsen</p>	<p><b>DATE</b></p> <p>03/14/2013</p>	<p><b>METHODE ELECTRONICS, INC.</b> <b>POWER SOLUTIONS GROUP</b> 1750 Junction Avenue, San Jose, CA 95112 (408) 453-9500</p> <p><b>TITLE:</b> USER DRAWING, CONNECTOR MODULE DUAL MINI-MCC 3 MM BUS FUSION LUG TERMINATION</p>		
	<p><b>ENGR:</b> R. Larsen</p>	<p>03/14/2013</p>			
	<p><b>CHECKED:</b> H. Han</p>	<p>03/14/2013</p>			
	<p><b>PROPRIETARY AND CONFIDENTIAL NOTICE</b> ALL INFORMATION IN THIS DRAWING IS CONFIDENTIAL AND PROPRIETARY INFORMATION AND IS NOT TO BE DISTRIBUTED, COPIED, OR SHARED EXCEPT WITH PRIOR WRITTEN APPROVAL OF METHODE ELECTRONICS, INC. POWER SOLUTIONS GROUP.</p>				
<p><b>SIZE</b> <b>C</b></p>	<p><b>DRAWING NUMBER:</b> <b>C5313-07452-001XX</b></p>	<p><b>REV</b> <b>A</b></p>	<p><b>SCALE:</b> 2:1</p>	<p><b>FILENAME:</b> 5313-07452-001XX</p>	<p><b>SHEET 4 OF 4</b></p>